

# The Apollo Historical Series

## Apollo 10

18 – 26 May, 1969



**Apollo 10** was the fourth manned mission in the Apollo program. The mission included the second crew to orbit the Moon, and the test of the lunar module in lunar orbit. The module came to within 8.4 nautical miles (15.6 km) of the lunar surface during practice maneuvers. According to the 2001 Guinness World Records Apollo 10 has the record for the highest speed attained by a manned vehicle: 39,897 km/h (11.08 km/s or 24,791 mph). The speed record was set during the return from the Moon on 26 May 1969.

### Crew

Thomas P. Stafford - Commander

John W. Young - Command Module Pilot

Eugene A. Cernan - Lunar Module Pilot

This dress rehearsal for a Moon landing brought Stafford and Cernan's lunar module *Snoopy* to 8.4 nautical miles (15.6 km) from the lunar surface. Except for that final stretch, the mission went exactly as a landing would have gone, both in space and on the ground, where Apollo's extensive tracking and control network was put through a dry run. Shortly after leaving low Earth orbit, the command/service module separated from the S-IVB stage, turned around, and docked its nose to the top of the lunar module still nestled in the S-IVB. The CSM/LM stack then separated from the S-IVB for the trip to the moon. Upon reaching lunar orbit, Young remained alone in command module *Charlie Brown* while Stafford and Cernan flew separately in the LM. They checked out the LM's radar and ascent engine, rode out a momentary gyration in the lunar lander's motion (due to a faulty switch setting), and surveyed the Apollo 11 landing site in the Sea of Tranquillity. The lunar module on this flight was not equipped to land, however. Apollo 10 also added another first—broadcasting live color TV from space.

<b>Mission name</b>	<i>Apollo 10</i>
<b>Command Module</b>	CM-106 callsign <i>Charlie Brown</i> mass 28,830 kg
<b>Service Module</b>	SM-106
<b>Lunar Module</b>	LM-4 callsign <i>Snoopy</i> mass 13,941 kg
<b>Crew size</b>	3
<b>Booster</b>	Saturn V SA-505
<b>Launch pad</b>	LC 39B Kennedy Space Center Florida, USA
<b>Launch date</b>	18-May-69 16:49:00 UTC
<b>Time in lunar orbit</b>	2 d 13 h 37 m 23 s
<b>Landing</b>	26-May-69 16:52:23 UTC 15°2'S, 164°39'W
<b>Mission duration</b>	8 d 00 h 03 m 23 s

### Special Thanks To:

Save the LUT  
<http://savethelut.com>

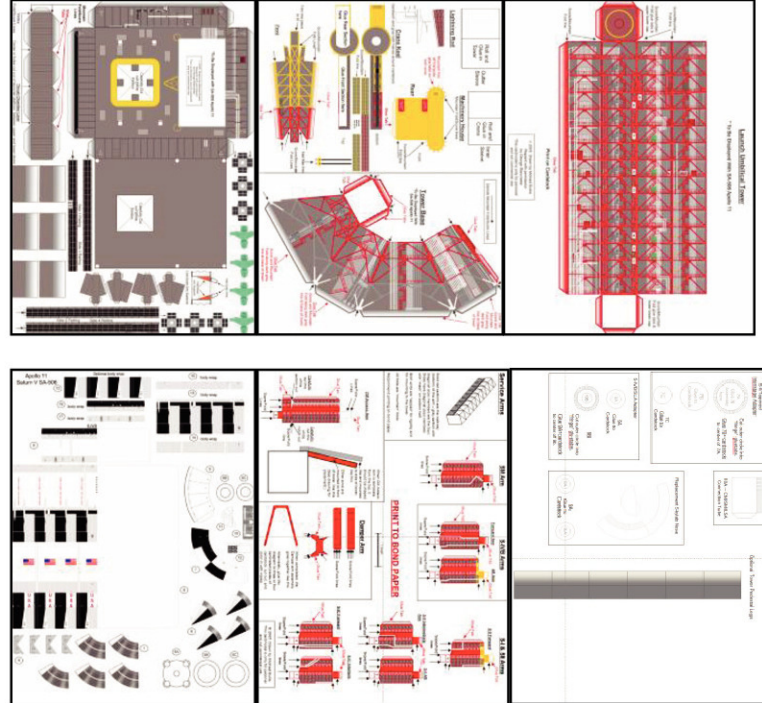
Kip Teague, The Project Apollo Image Gallery  
[http://apolloarchive.com/apollo\\_gallery.html](http://apolloarchive.com/apollo_gallery.html)

Ton Noteboom

Wikipedia  
[http://en.wikipedia.org/wiki/Main\\_Page](http://en.wikipedia.org/wiki/Main_Page)

And the wonderful folks at the Yahoo LUT Forum

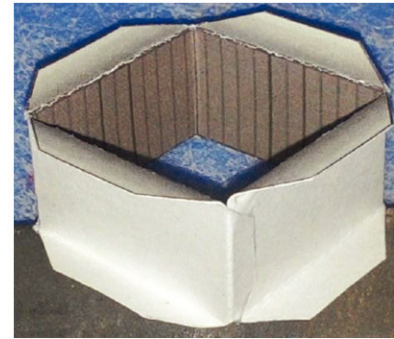
1. Print the Launcher Base, Tower Base, and Tower pages on cardstock. Print the Saturn V, the Tower Access Arms, and the sheet of Auxiliary parts to regular printer paper.



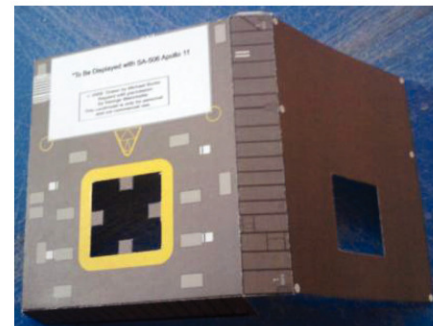
2. Score & cut out Thrust Liner



3. Fold glue tabs out, printed side in, and glue as shown.



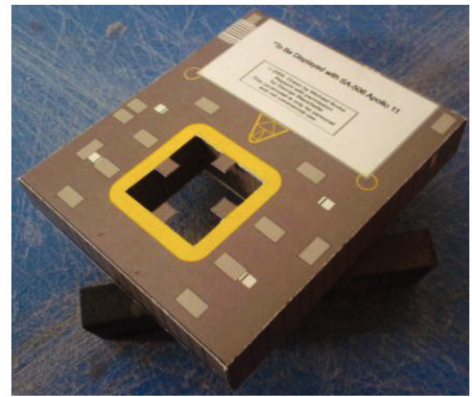
4. Score, cut out and fold Launcher Base. Carefully cut out



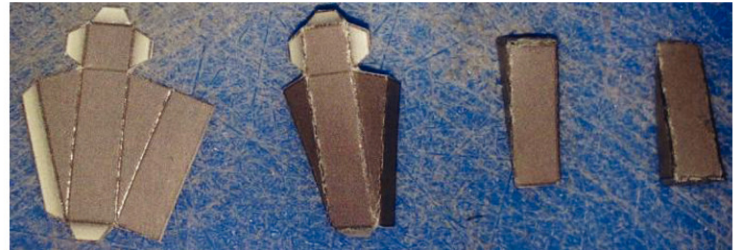
5. Glue thrust liner to inside of Launcher Base, carefully aligning with the hole cut in the previous step.



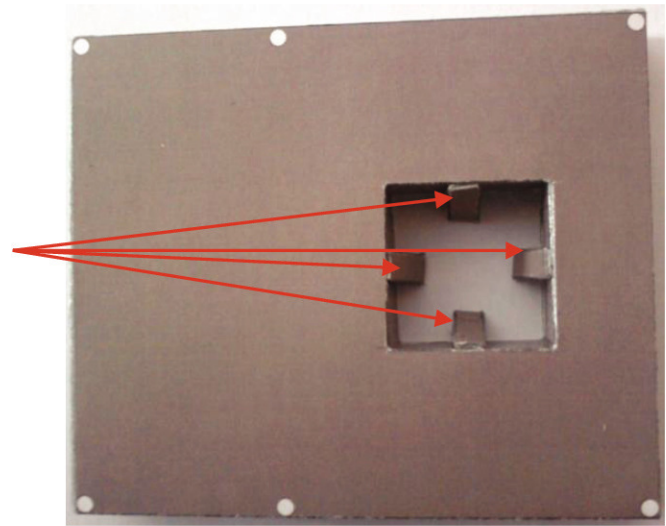
6. Glue shut the Launcher Base



7. Score, cut out and glue the Hold Down Arm Supports



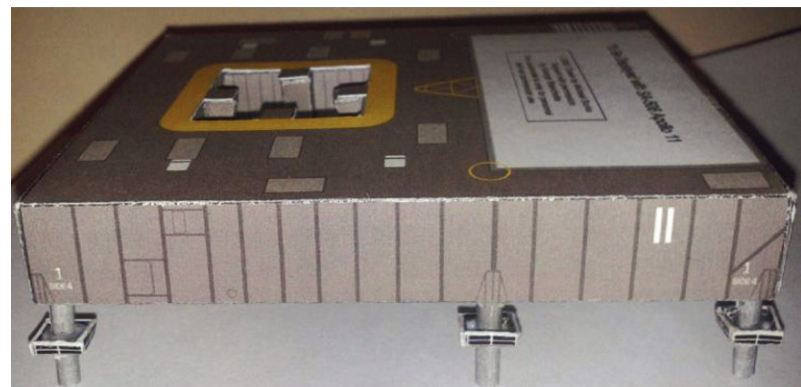
8. Glue the Hold Down Arm Supports on the inside of the Thrust Chamber, aligned under the squares on the top of the Launcher Base, as shown.



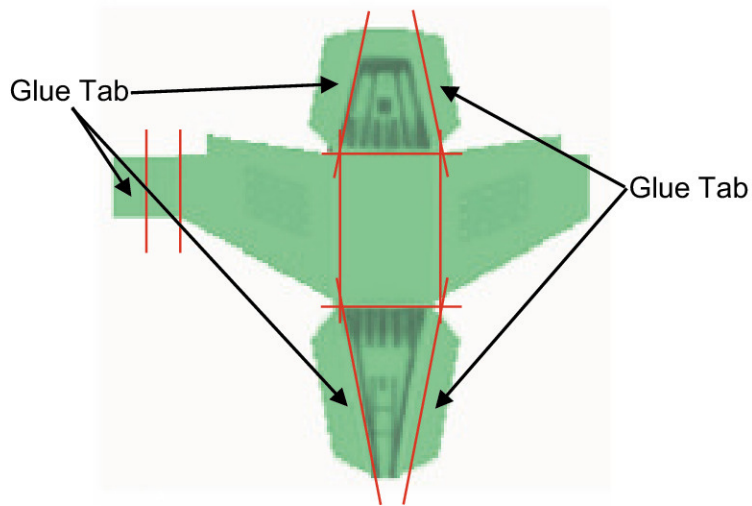
9. If you wish to use the Launcher Pedestals, cut out and form the Pedestal Platforms. Drill out the holes indicated. Roll and form the pedestal legs. If you find it easier to roll the tubes with regular printer paper, use the legs on the Auxiliary Parts sheet instead of the cardstock parts on the Launcher Base sheet. Glue the platforms  $\frac{1}{4}$  of the way up the legs, as shown.



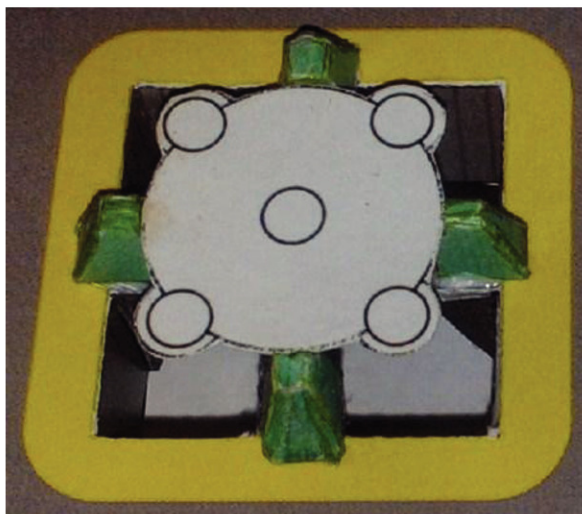
10. If you choose to use the Launcher Base Pedestals, carefully drill out the holes indicated on the bottom of the Base, and insert the pedestals in the base.



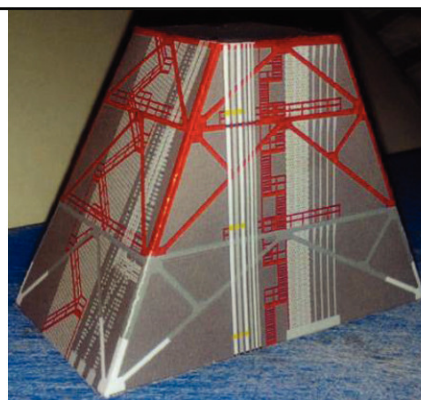
11. Score, cut out, fold, and glue Hold Down Arms. The parts are very small, and the score lines may be difficult to see. Refer to the diagram for the location of the score lines (in red) & glue tabs. Assemble as shown.



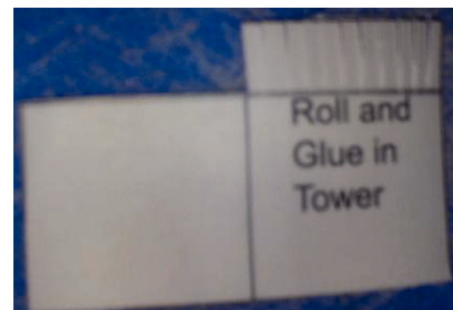
12. Cut out part 5A from Saturn V page & glue to cardstock. Use 5A to align and center the Hold Down Arms on the Launcher Base. Make sure to save Part 5A for Step 50.



13. Score, cut out, fold, and assemble Tower Base. When dry, glue in place on Launcher Base.



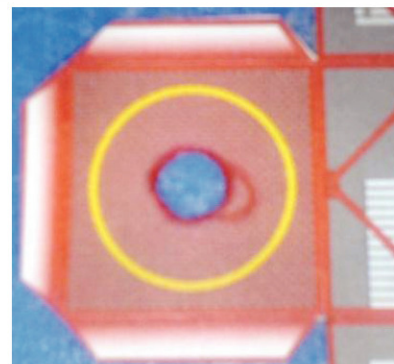
14. Cut out the Outer Sleeve, as shown in the photo. "Fringe" cut the remaining part as shown to make glue tabs.



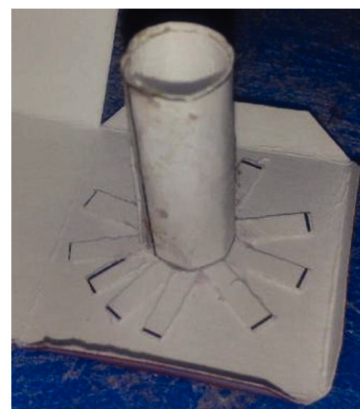
15. Roll sleeve into a tube, and fold "fringe" out.



16. Score, cut out, and fold Tower. Carefully cut out circle in top of Tower, as indicated. (And be more careful using the red marker to color the edge of the hole than I was...)



17. Glue Outer Sleeve to inside of top of tower, carefully aligning with hole cut in Step 16.



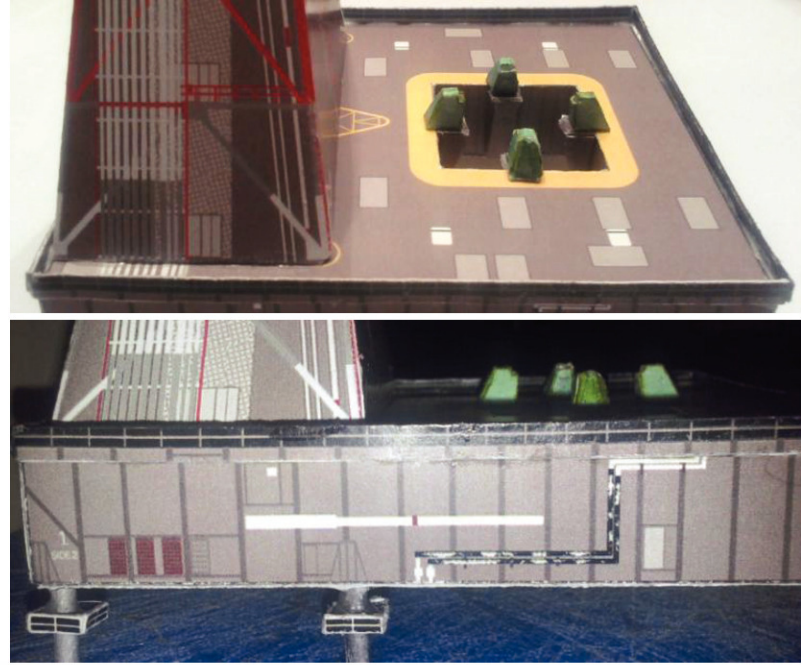
18. Close & glue up the rest of the tower.



19. Cut out and roll Inner Sleeve. Dry fit in hole/Outer Sleeve as shown in photo. Fit should be snug, but able to rotate freely. When sized properly, glue tube to final shape. Save Inner Sleeve for Step 26.



20. Score, cut out, fold, & glue together Launcher Base Rails. Glue in place as indicated. The black “rail” portion should extend above the platform, the gray portion should be even with the platform.



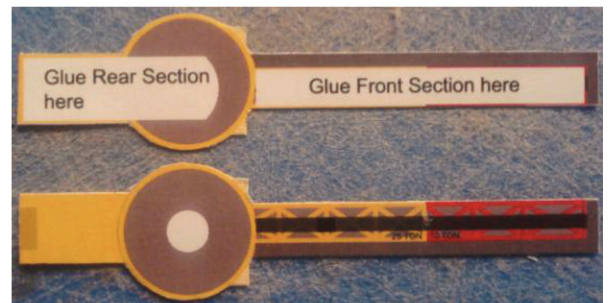
21. Score, cut out, & fold Crane Machinery House. Cut out area outside ends of Machinery House into “fringe” glue tabs, as shown.



22. Glue up remainder of Machinery House. Recommend using clay, a screw, etc. in the back of the part to act as a counterweight for the crane boom before gluing shut.



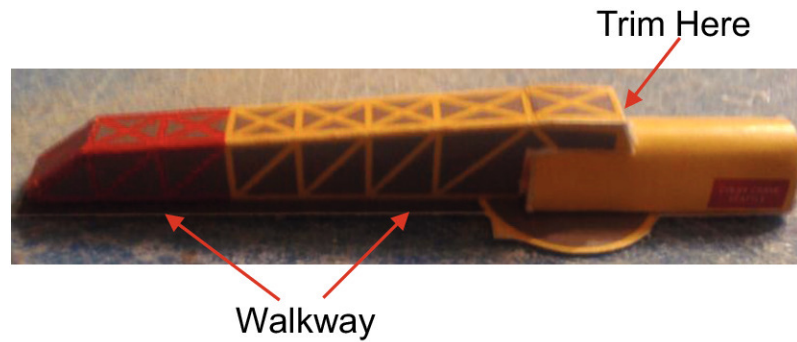
23. Cut out the two halves of the Crane Keel. Glue together, with the printed sides out



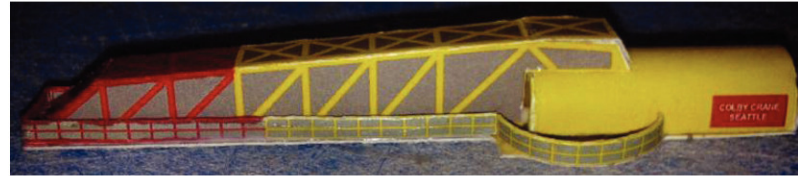
24. Glue the Machinery House to the Crane Keel in the location indicated



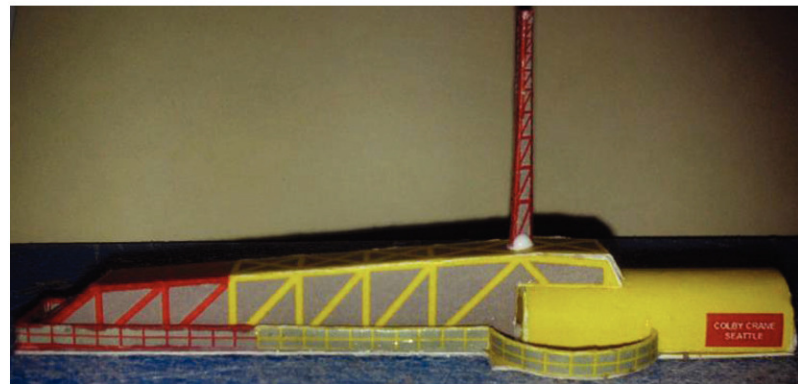
25. Score, cut out, fold, & glue together the Crane structure. As indicated on the part sheet, the aft end of the part should be trimmed carefully to fit. Glue in place on Crane Keel. Notice that the structure is offset, allowing for a "walkway" as indicated in the photo.



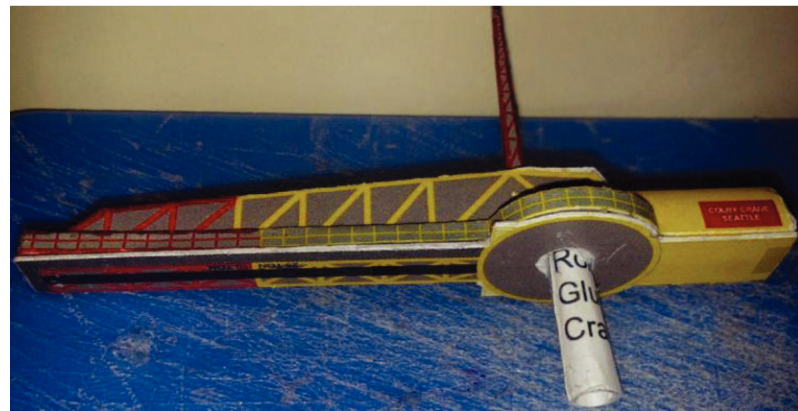
26. Score, cut out, fold, & glue together the Crane railing. It will need to be trimmed to fit. Glue to Crane, as shown



27. Score, cut out, fold, & glue together the Lightning Rod. Recommend cutting a small piece of toothpick, inserting half of it in the end of the Rod, drilling a small hole in the top of the Crane, and gluing together as shown.



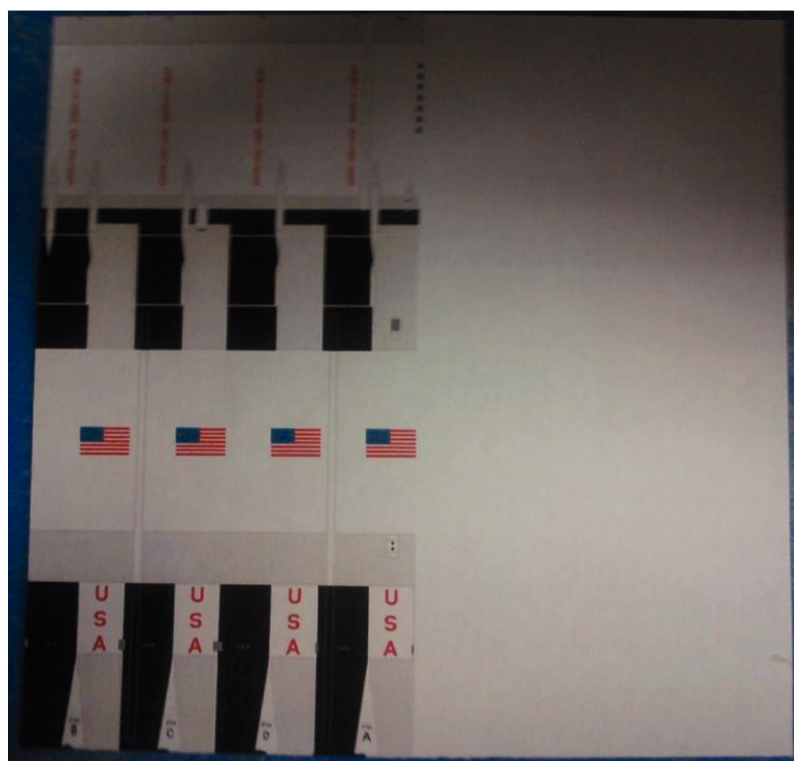
28. Carefully cut out circle in bottom of Crane Keel, also cutting thru bottom of Crane Structure. Glue Inner Sleeve from Step 17 into hole. A Crane Hook and length of cable are supplied. Score, cut, fold & glue together. Cut to desired length of cable and glue to desired location along underside of Crane Keel.



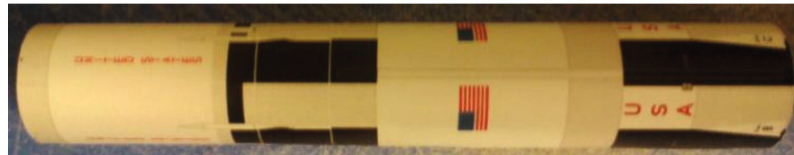
29. Glue Tower to Tower Base, as indicated. Carefully align "plumbing" in order to get proper orientation. When dry, insert Crane Inner Sleeve in Outer Sleeve in top of Tower, but do not glue in place.



30. Cut out Part 5, S-IC/S-II sheet. Note that there is an area to the right of the printed portion that is an underwrap area.



31. Roll and glue S-IC/S-II.



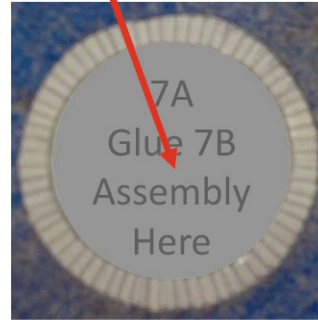
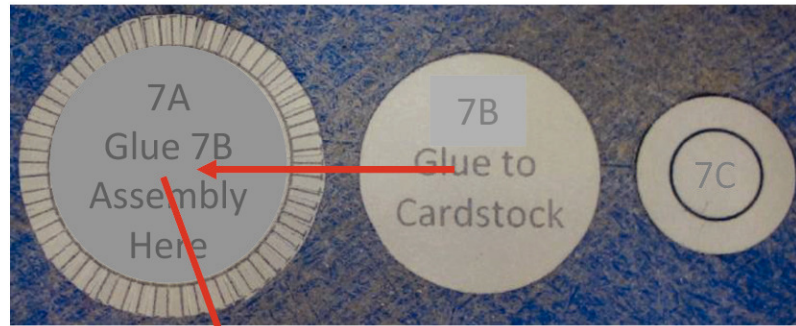
32. Glue Parts 5b and 5C to cardstock. When dry, cut out, and cut out center sections, forming rings



33. Glue Parts 5b and 5C inside both ends of Part 5, flush with the ends of the tube.



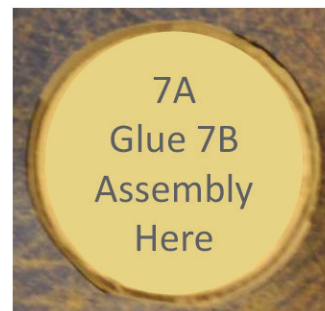
34. Cut out Parts 7A, 7B, and 7C from the Auxiliary part sheet. Cut outer section of Part 7A into "fringe" glue tabs. Glue 7B and 7C to cardstock and cut to shape. When dry, glue 7B/cardstock assembly to center of 7A.



35. Cut out Part 7 and roll into a truncated cone. Glue part 7C into 7, flush with the end of 7. Bend the fringe glue tabs up, away from Part 7A.



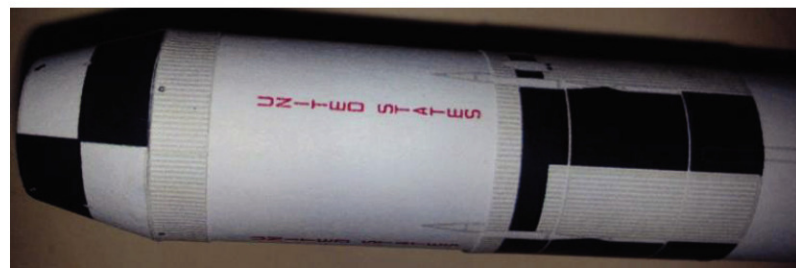
36. Glue 7A/7B assembly in the open end of 7/7C assembly as shown.



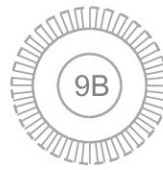
37. If you wish, glue on the body wraps.



38. Glue Part 7 assembly to end of Part 5 assembly.



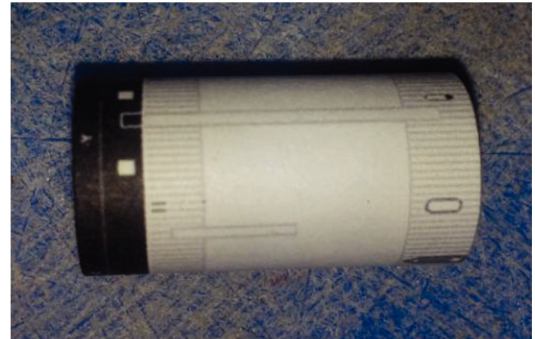
39. Glue part 9A from Auxiliary Part Sheet to cardstock. When dry, cut to shape. Cut out part 9B, and cut outside to make “fringe” gluetabs, like in Step 34. When dry, glue 9A to center of 9B, like was done in Step 34.



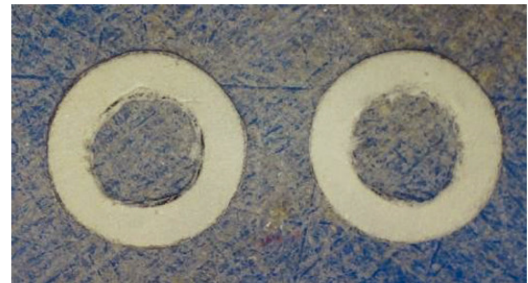
40. Cut out Part 9, Service Module/Lunar Module Adapter, and roll into truncated cone. As was done in Step 35, fold part 9B glue tabs away from 9A/cardstock assembly, then glue into bottom end of SLA, flush with bottom of part.



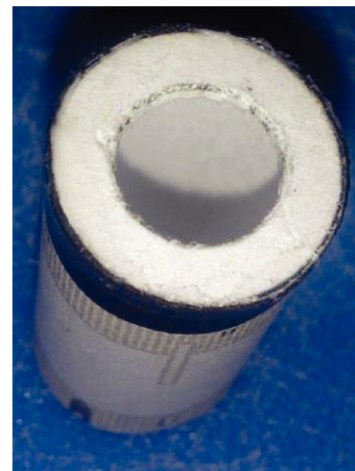
41. Cut out Part 8, S-IVB, and roll into tube, as shown.



42. Cut out Parts 8B & 8C, and glue to cardstock. When dry, cut to final shape and remove center section, as shown.



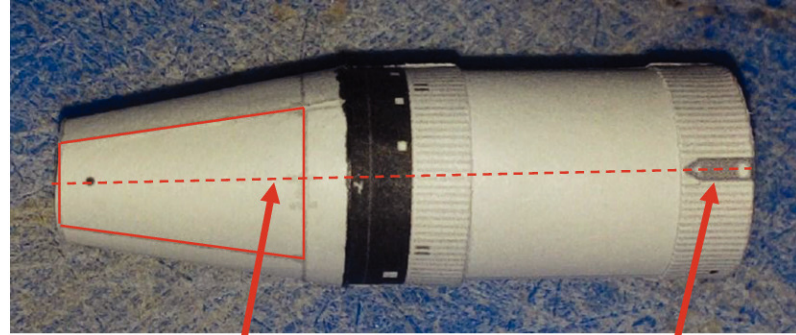
43. Glue Parts 8B and 8C/cardstock assemblies to ends of Part 8, flush with ends of tube.



44. If you wish, glue outer wraps to Part 8 assembly.



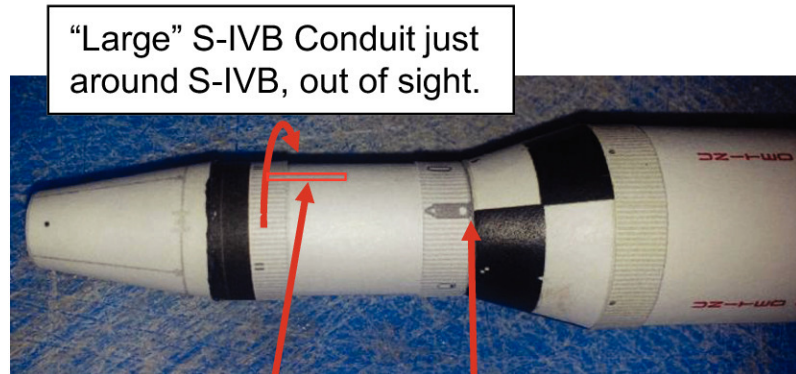
45. Glue SLA assembly to S-IVB Assembly.  
Note alignment of SLA panel to S-IVB detail.



Centerline of SLA Panel

S-IVB Detail

46. Glue S-IVB assembly to rest of rocket. Note alignment of S-IVB detail to S-II/S-IVB Interstage. Note locations of S-IVB "Conduits"

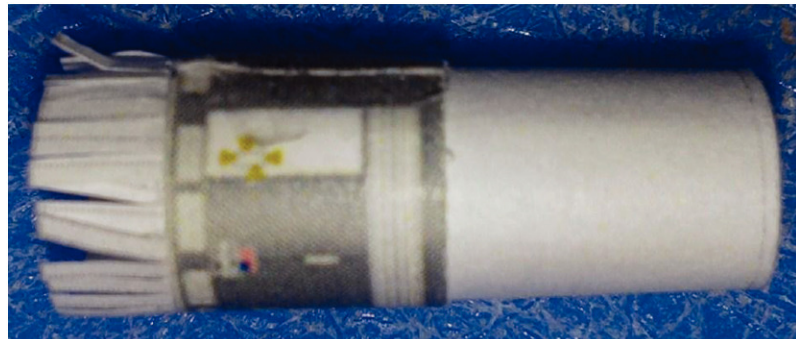


"Large" S-IVB Conduit just around S-IVB, out of sight.

"Small" S-IVB Conduit

Note alignment

47. Cut out Service Module, roll, and glue into a tube. From Auxiliary Part Sheet, cut out Part 10A. Cut indicated area into "fringe" glue tabs. Roll 10A into a tube, and fit inside SM. Size the SM/SLA connector such that it fits snugly inside the SM. Glue conector inside SM with "fringe" at end of CM side of SM, as shown in photo.



48. Cut out Apollo Boost Protective Cover and glue into cone.



49. Fold "fringe" glue tabs of SM/SLA adapter down, and glue Boost Protective Cover to SM. Note alignment of BPA hatch and RCS quad.



Hatch in line with RCS quad.

50. Glue BPA/SM to SLA. Note alignment of RCS quads relative to SLA panels.



RCS Quad aligned with center of SLA Panel

BPA Hatch is on OPPOSITE side of vehicle

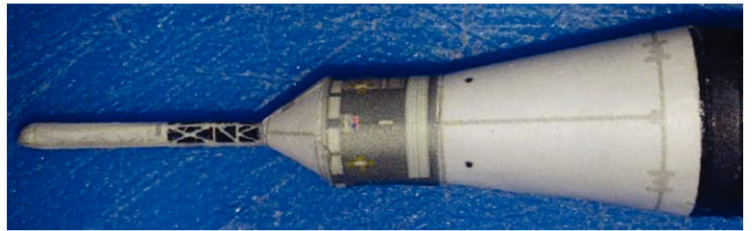
51. Cut out Launch Escape System tower. Roll into a tube, and "fringe" the top end as shown.



52. Put a drop of glue in the "fringe petals", then pinch closed to form a point.



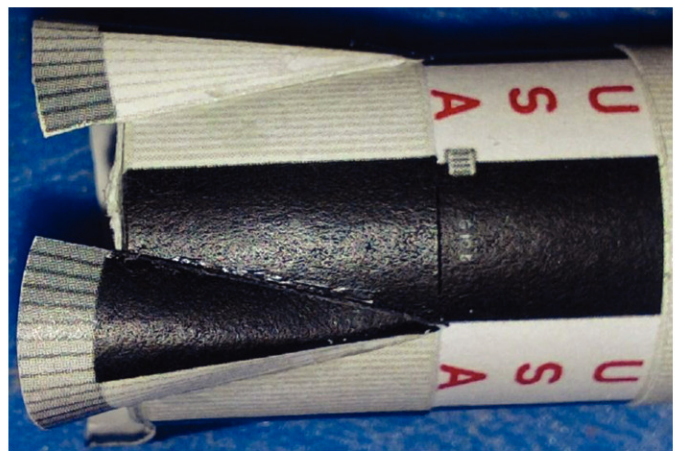
53. Glue LES tower to BPC.



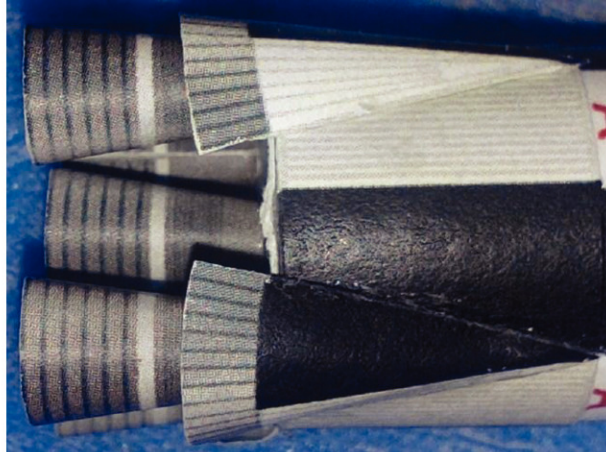
54. Glue Part 5A from Step 12 into place on the base of the vehicle. Note the letters near the base – these indicate the proper location of the lettered fins.



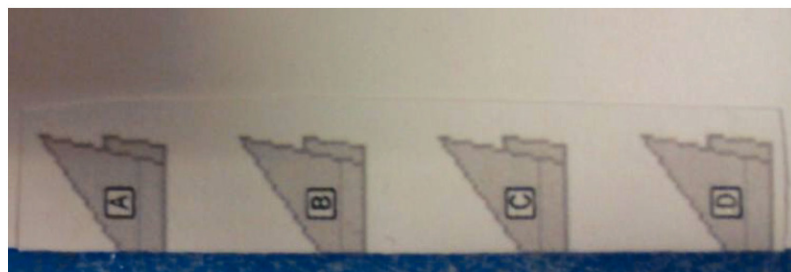
55. Score, cut out, & fold F-1 engine fairings and glue into place.



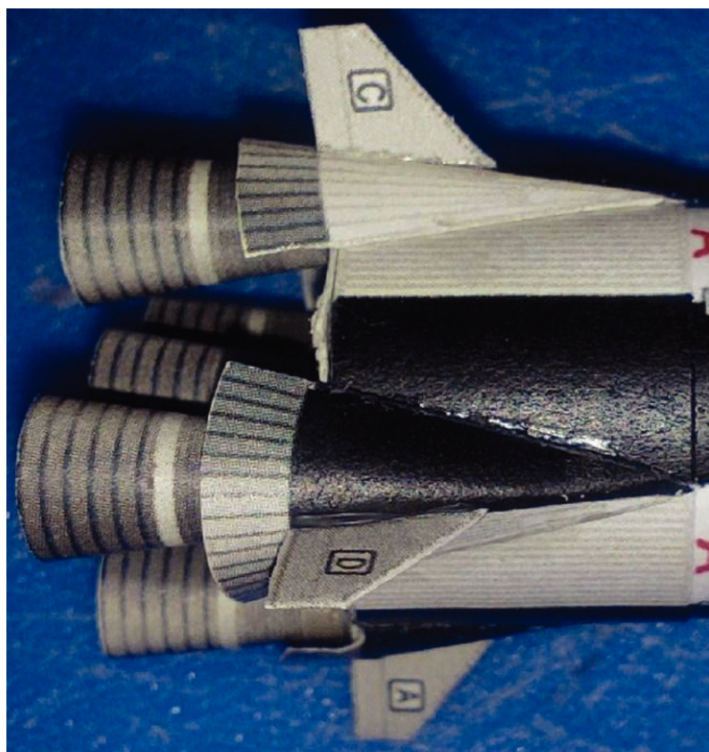
56. Cut out and form engines, then glue into place



57. Score, cut out and fold fins in a continuous sheet. Sandwich and glue a piece of cardstock inside the folded fins. When dry, cut out the individual fins.

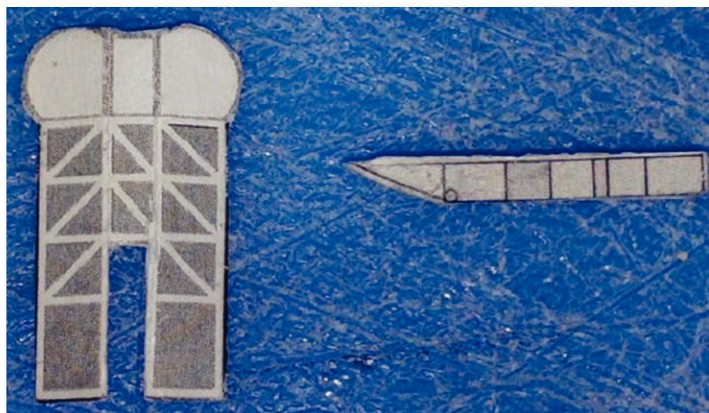


58. Remembering the location of the letters on the rocket base (as mentioned in Step 54), glue the corresponding fins to the engine fairings.

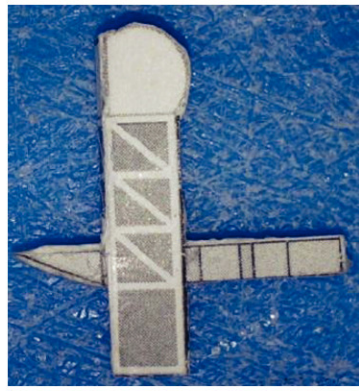


59. From the Auxiliary Parts Sheet, score, fold, and cut out Tail Service Mast towers.

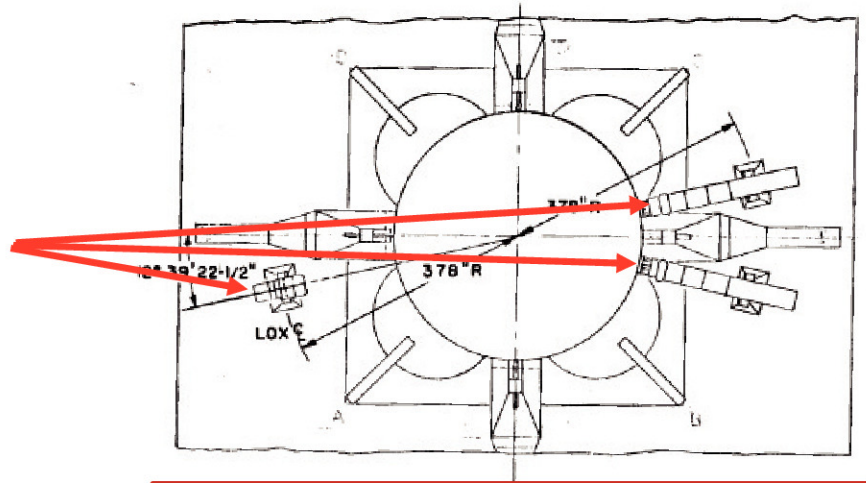
Cut out 1 group of three Tail Service Mast Arms. Laminate 6 scrap pieces of cardstock approximately the size of the group of three arms. Glue the arms to the stack of cardstock. When this assembly is dry, with a sharp knife and a straightedge, carefully cut out the arms, being careful to cut straight through the assembly. Glue the other side of the arm to the assembly



60. Fold a tower into an "open box" Glue an arm into the tower, as shown.

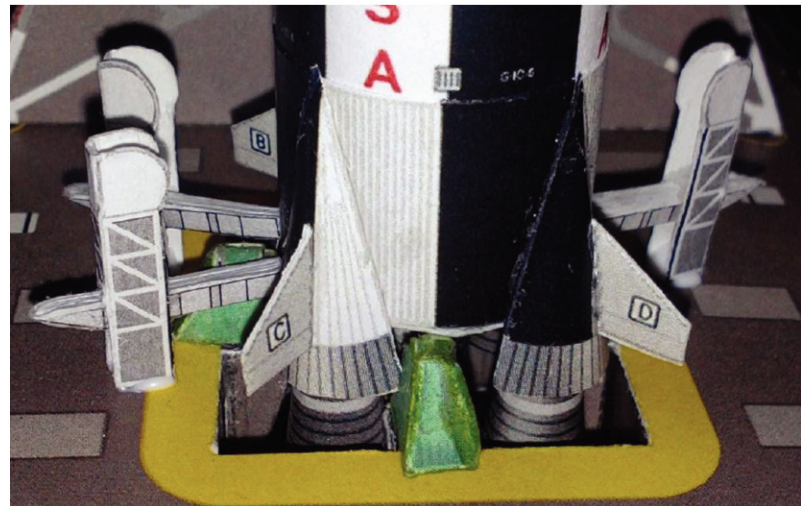


61. Glue Tail Service Masts into locations shown in diagram and photo.



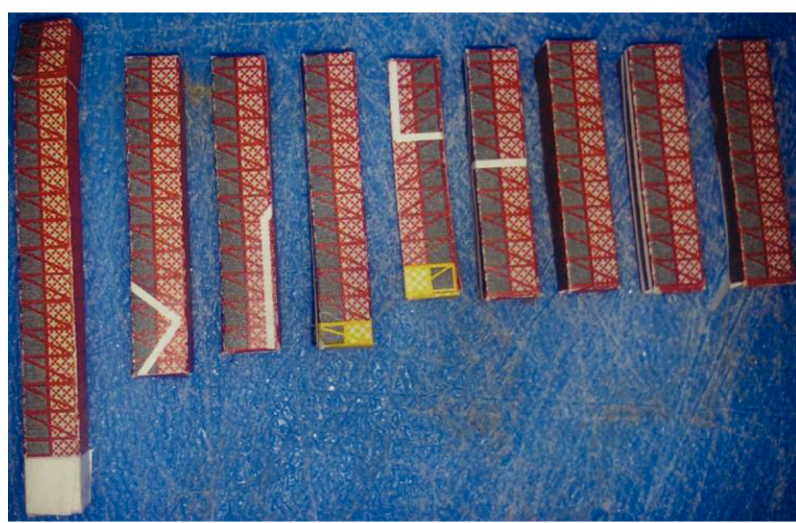
Tower

Place Saturn V on Launcher and use as reference for Masts.



62. Score, cut out, fold, and assemble Tower Access Arms. Note numbers on each arm – they correspond to marked positions on the Tower.

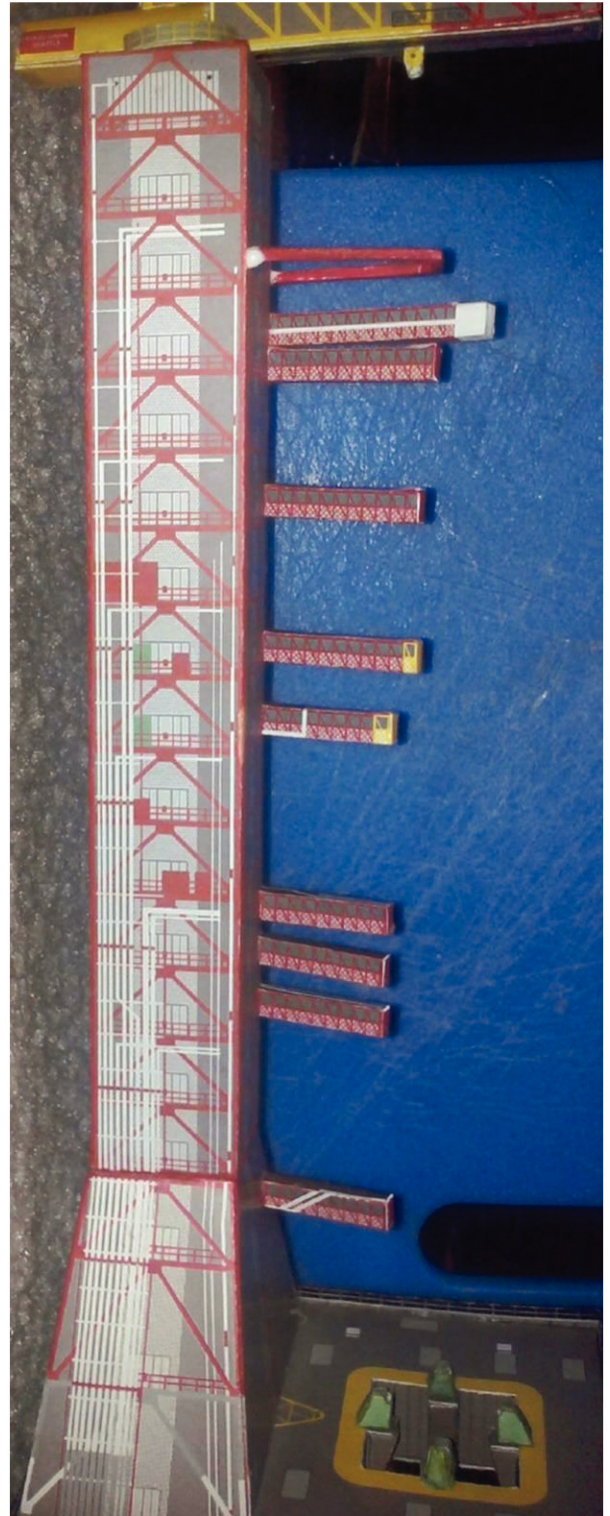
Build the Damper Arm. Either assemble the parts shown or laminate 4 sheets of cardstock and glue the Damper Arm graphic to the cardstock assembly. When this assembly is dry, carefully cut out, as with the Tail Service Mast Arms. Color the non-red portions with a red marker.



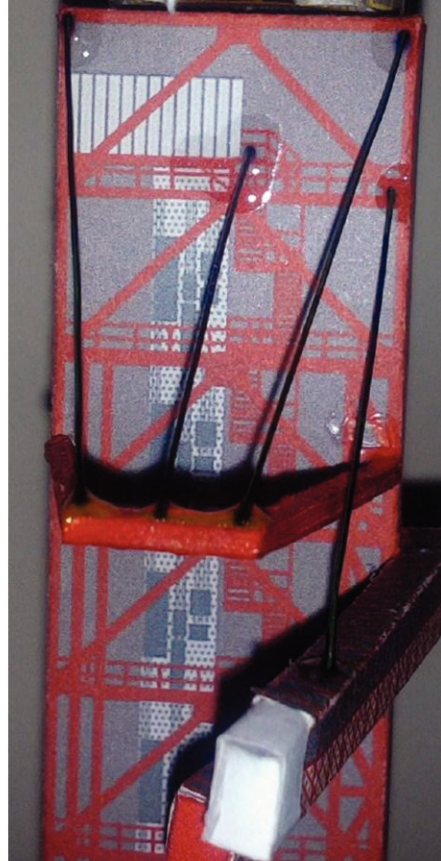
63. Glue Access Arms to the tower, matching the numbered Arm position on the tower to the corresponding arm. Note – Arm position 1 is not marked on the Tower Base. Refer to Appendix for the proper location.

Arms should be canted in, toward the centerline of the Saturn V.

Note: Damper Arm for SA-500F is in a different location than shown in photo. Refer to diagram in Appendix

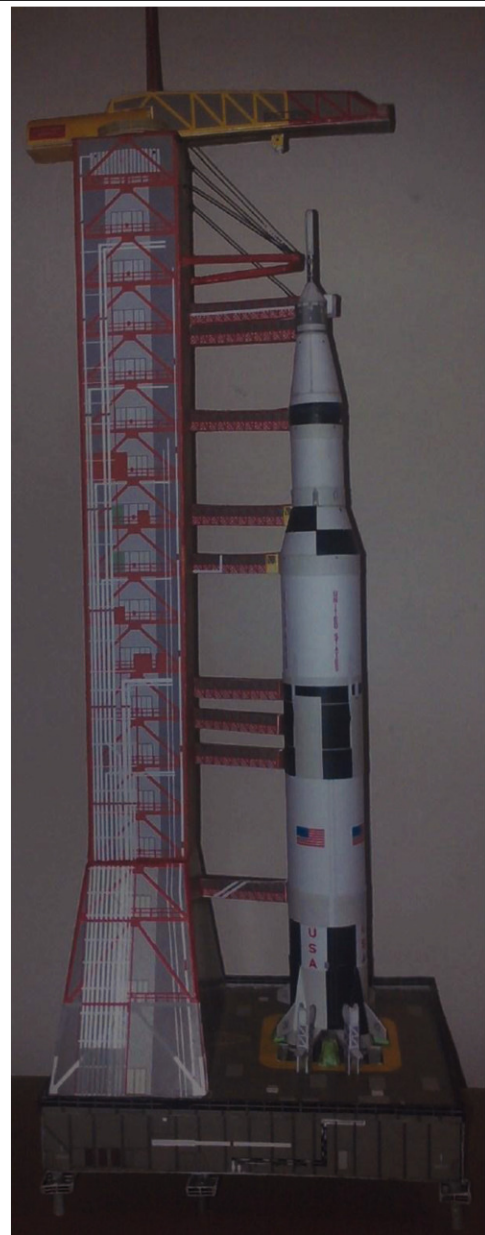


64. If you wish, glue thin wire, stiffened thread, etc to the Damper Arm and the Crew Access arm, to depict the cables attached to these components



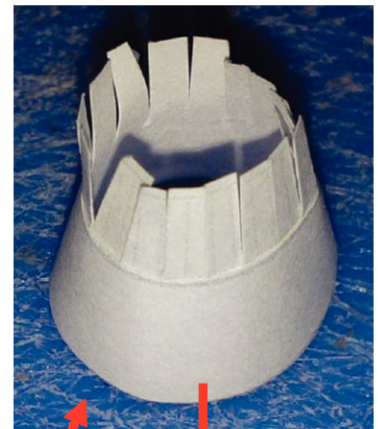
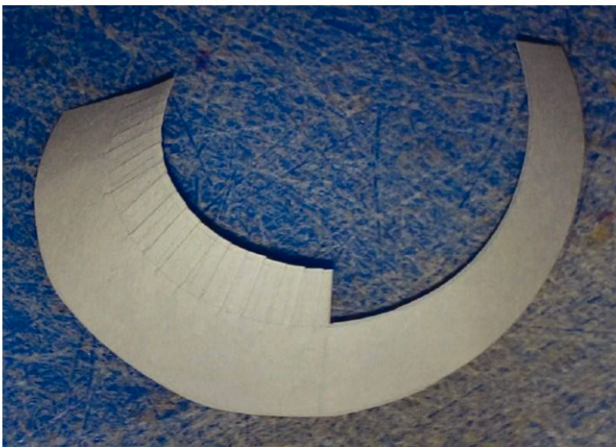
65. Place the Saturn V on the Launcher. Glue if you wish.

Your model is complete.

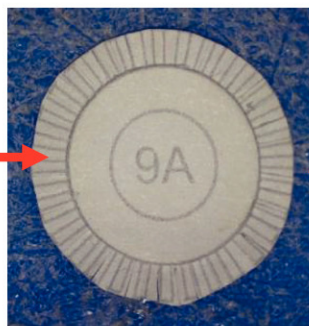
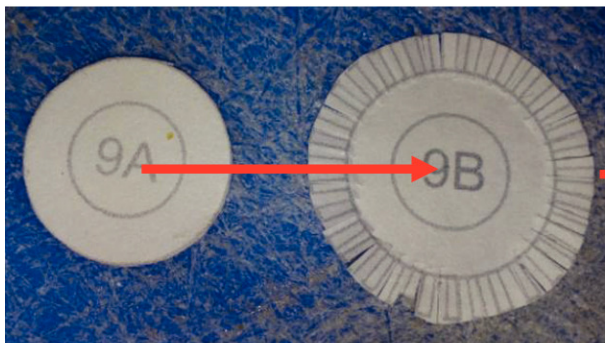


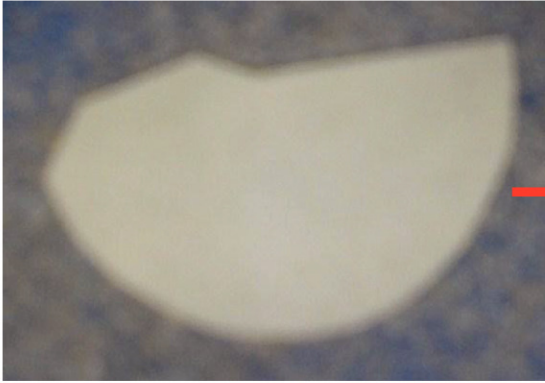
# Skylab Assembly Photos

The following photos depict the assembly of Skylab, using similar techniques as shown for the S-IVB. The S-IC & S-II portions are assembled the same as the Apollo Moon rocket.



Lower portion of Nosecone. This is a 2-layer part. Fringed portion is the underwrap

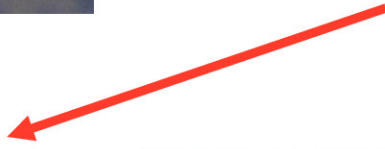
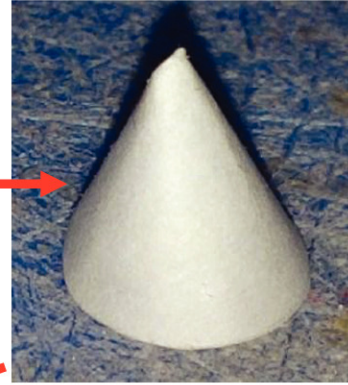




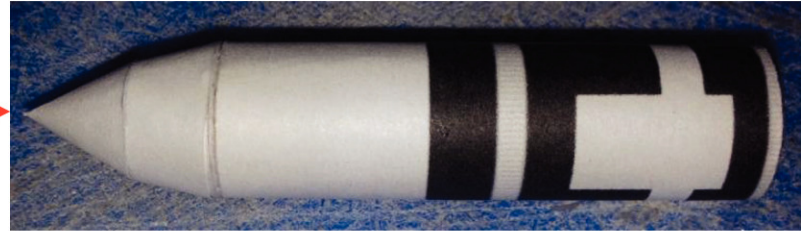
Upper Nose Cone



Roll into cone



Glue Upper Nose Cone onto lower portion of Nose Cone

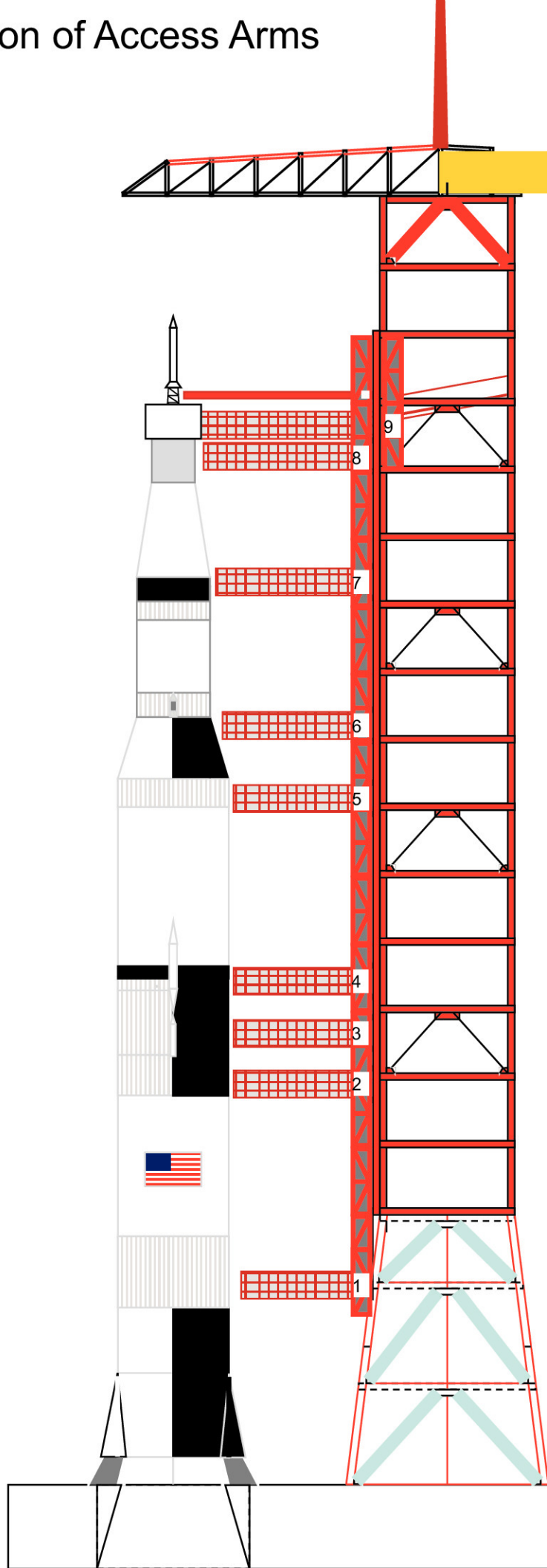


Glue Nosecone onto Orbital Workshop

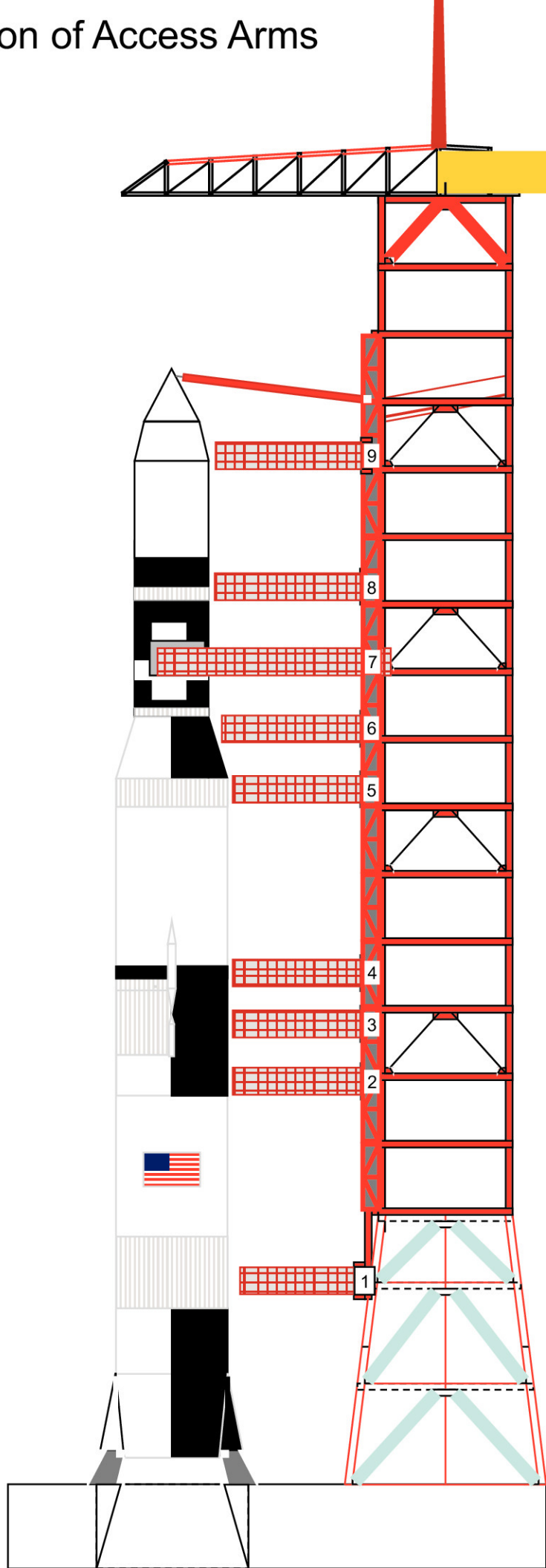
Glue Skylab onto S-II



# Appendix: Location of Access Arms

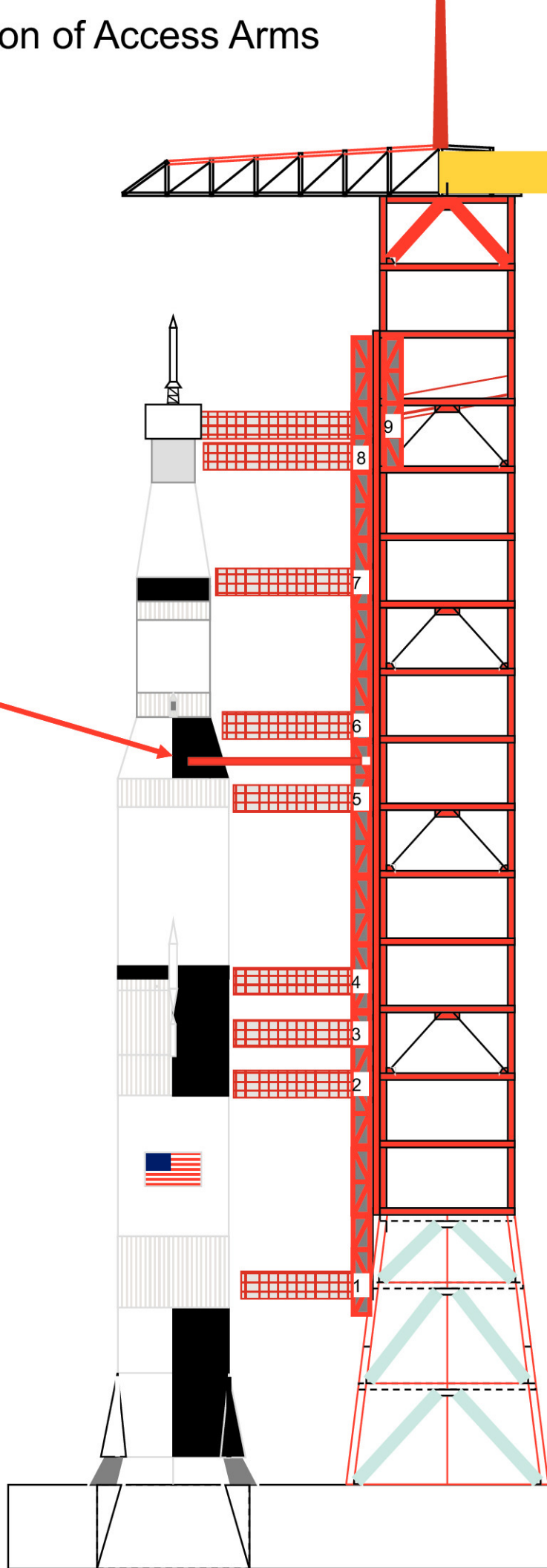


# Appendix: Location of Access Arms for Skylab



# Appendix: Location of Access Arms for SA-500F

Note Location of Damper Arms



**S-II/Tapered Interstage Adapter**



Cut outer circle into "fringe" gluetabs.

Glue 7B+cardstock to center of 7A.

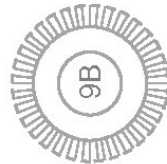


7C  
Glue to  
Cardstock

**S-IVB/SLA Adapter**



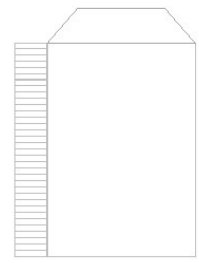
9A  
Glue to  
Cardstock



9B

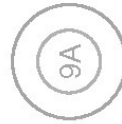
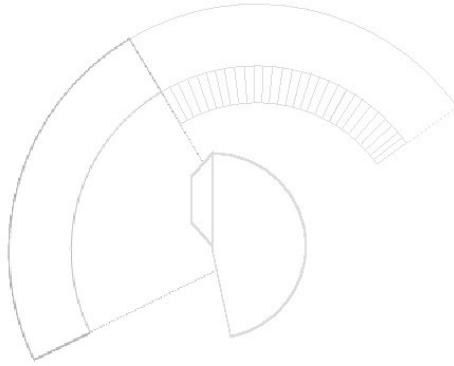
Cut outer circle into "fringe" gluetabs.

Glue 9A+cardstock to center of 9b.

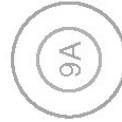


10A -- CM/SM/SLA Connection Tube

**Skylab Nose**



9A  
Glue to  
Cardstock

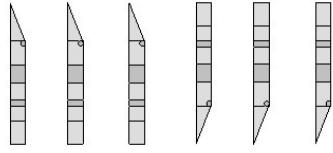


**Optional Tower Pedestal Legs**

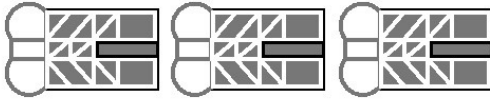


**Tail Service Masts**

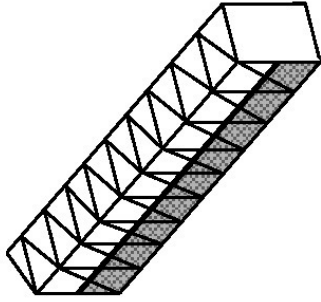
**Arms**



**Towers**



## Service Arms



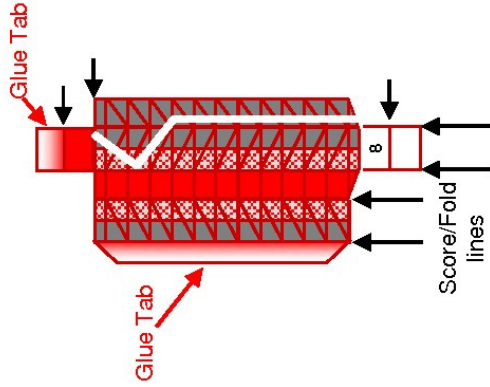
Solid red sections are the walkway (bottom) of the arm – gray section with diagonal cross members are the tops. Sides have diagonal cross members with "mesh" on bottom half.

Both ends are "capped" for rigidity and for mounting to the tower.

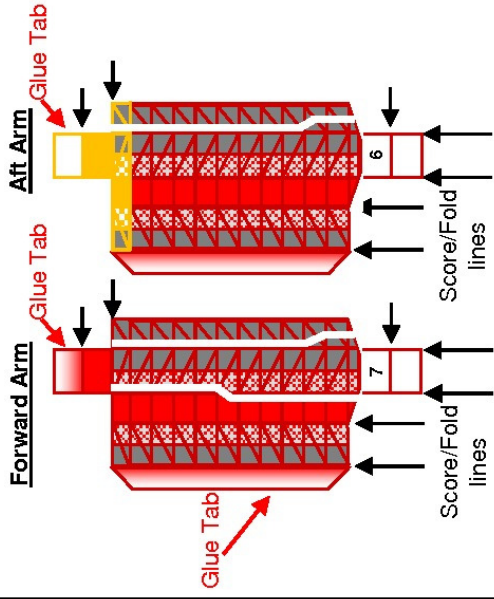
All folds are "mountain" folds.

Recommend printing on bond paper.

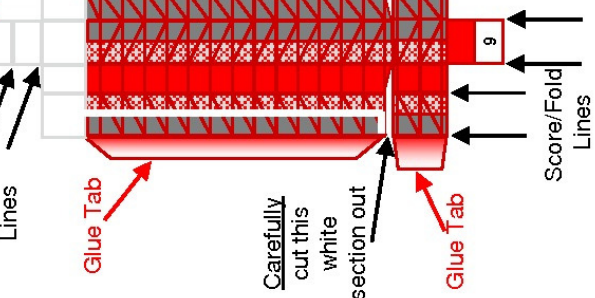
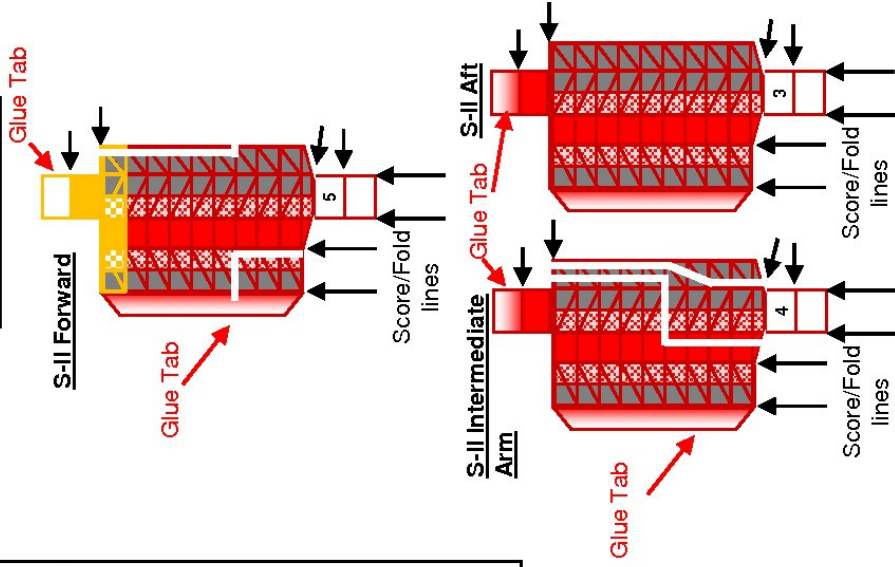
## SM Arm



## S-IVB Arms



## S-I & SII Arms

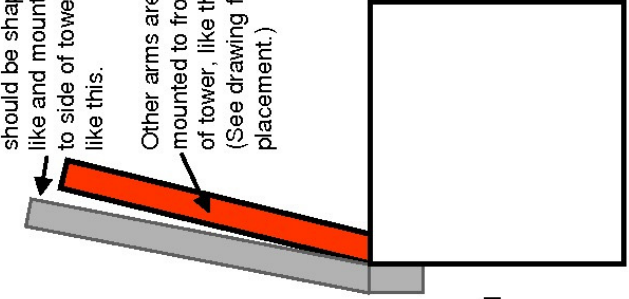


Carefully cut this white section out

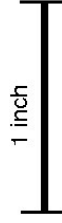
Carefully cut this white notch out

When CM Access Arm is complete, from the top, it should be shaped like and mounted to side of tower, like this.

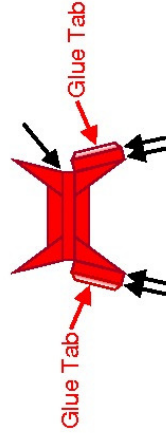
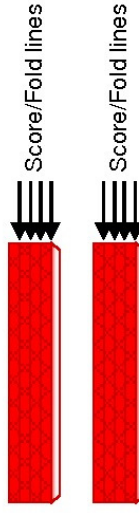
Other arms are mounted to front of tower, like this. (See drawing for placement.)



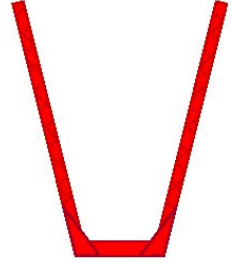
## PRINT TO BOND PAPER



## Damper Arm

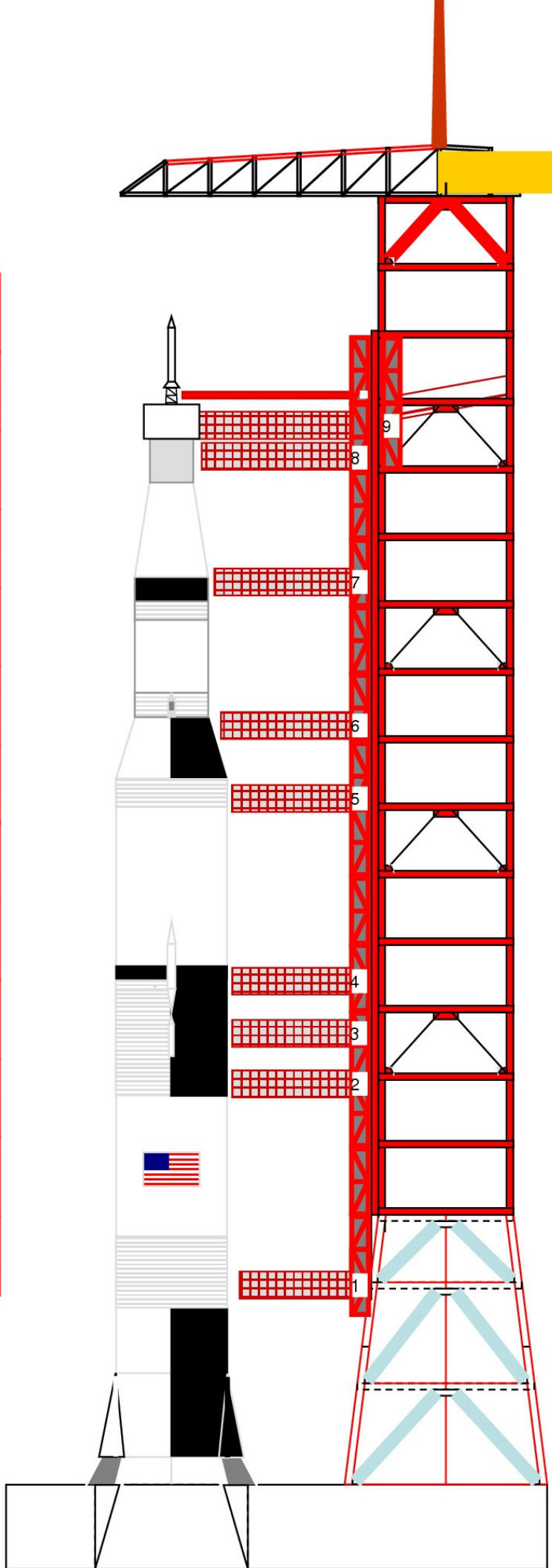


When completed, the Damper arm assembly goes together like this.



Alternately, glue this diagram to three or four laminated pieces of cardstock, cut out, and color in with marker.

Access Arm Girder, Top Section – Side 1



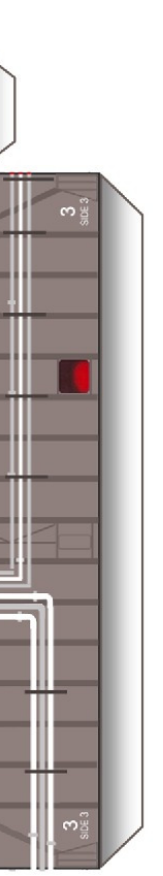
Access Arm Girder,  
Base Section – Side 1



Access Arm Girder, Top Section – Side 4

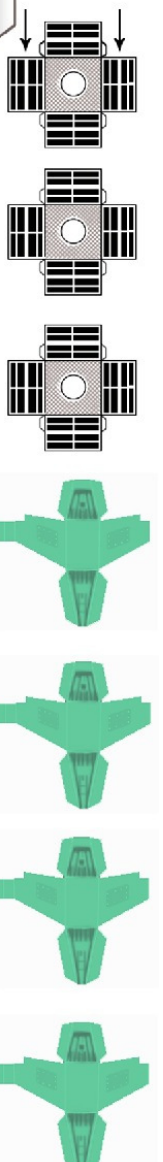
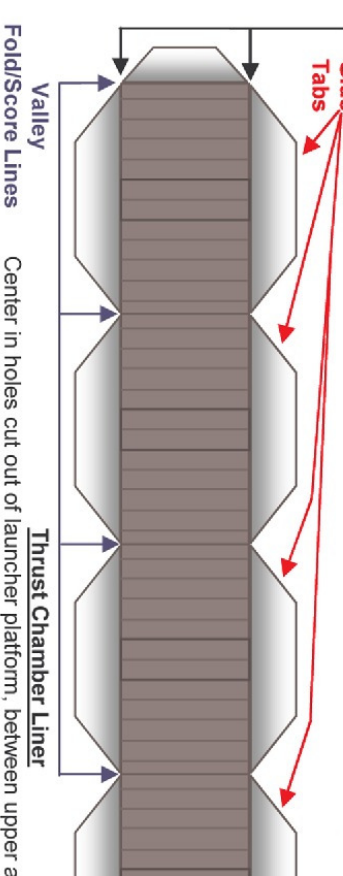




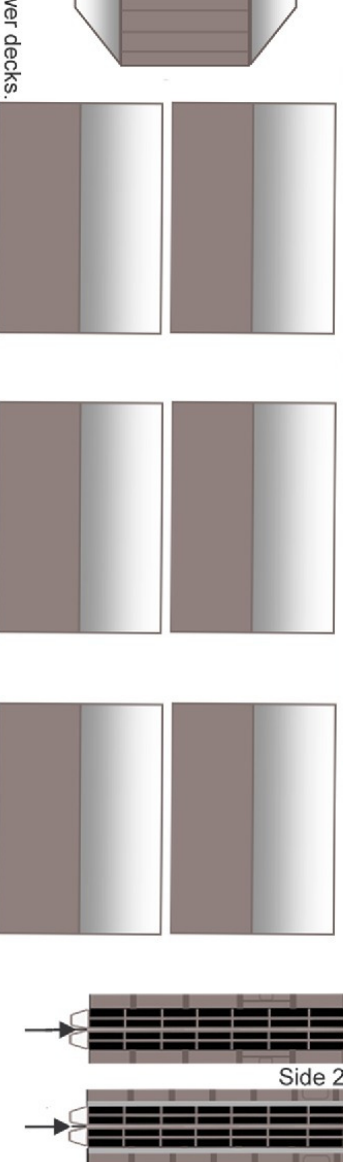
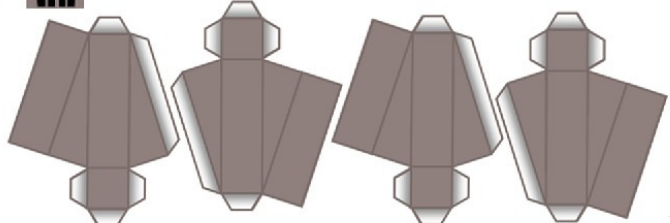
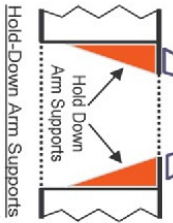


To Be Displayed with SA-505 Apollo 10

© 2005 Drawn by Michael Burke  
Reprint with permission  
by George Blanchette  
This cardmodel is only for personal  
and not commercial use.



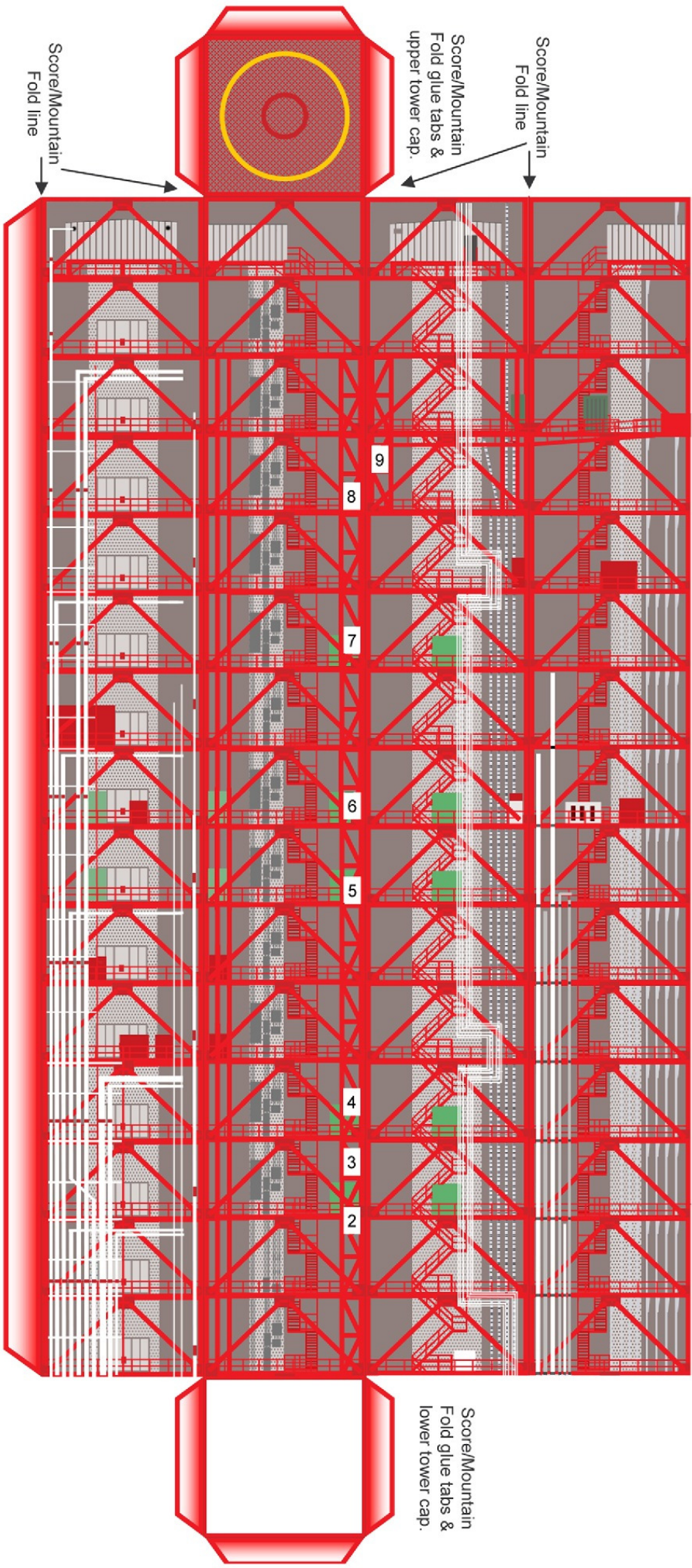
Hold Down Arms





# Launch Umbilical Tower

\* To Be Displayed With SA-505 Apollo 10



Print on Cardstock

© 2005 Drawn by Michael Burke  
Reprint with permission  
by George Blanchette  
This cardmodel is only for personal  
and not commercial use.