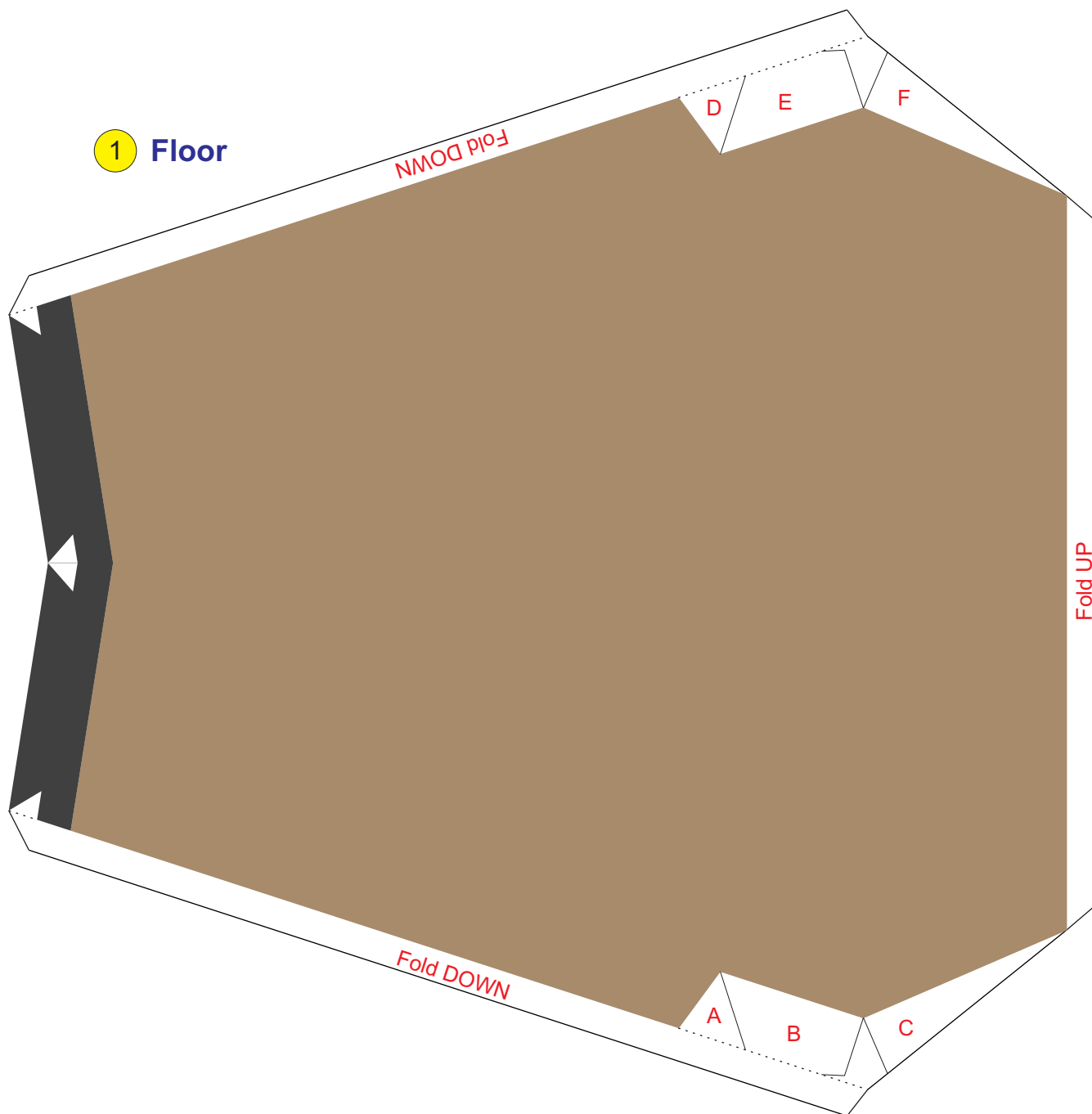


USS ENTERPRISE BRIDGE (NCC-1701)Print this page on 110 pound (199 g/m²) cardstock**Hako-sized Model design by Ron Caudillo (ronaldcaudillo@yahoo.com)**

Valley Fold (fold up) -----

Mountain Fold (fold down) -----

Sized for Hako figures designed by:

Masume Washington (<http://masamune.freespaces.com/>),Steve Marshall (<http://www.homespunmagixx.com/>),and The Professor (http://www.professorplastik.com/monster_site/proscenium/kits/xtrakits/paperkits/page_gohako.htm#)**TURBOLIFT****1 Floor**

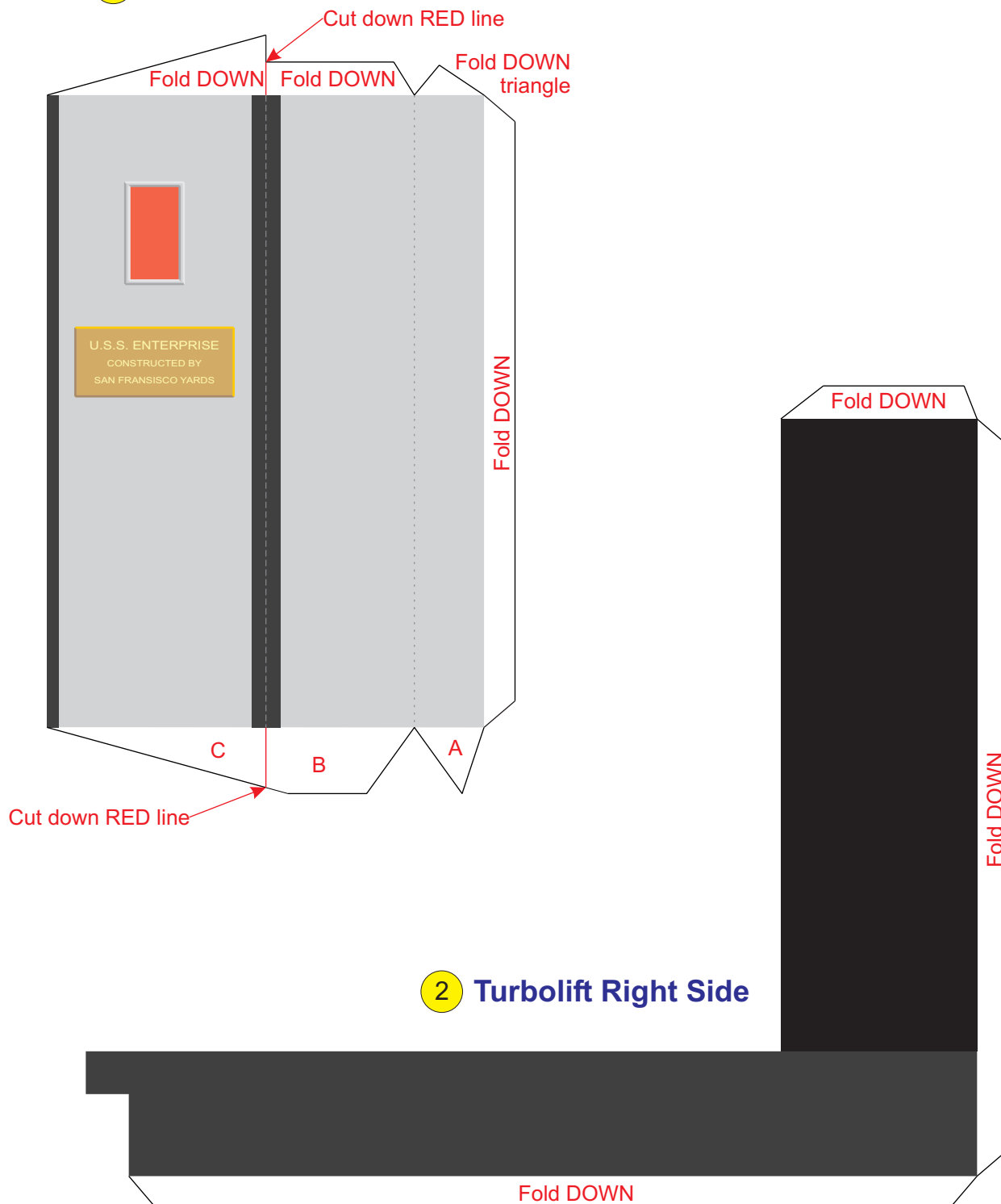
USS ENTERPRISE BRIDGE (NCC-1701)**Hako-sized Model design by Ron Caudillo (ronaldcaudillo@yahoo.com)**Print this page on 110 pound (199 g/m²) cardstock

Valley Fold (fold up) -----

Mountain Fold (fold down)

Sized for Hako figures designed by: Masume Washington, Steve Marshall, and The Professor

centimeters

4 Right Side Wall**2 Turbolift Right Side**

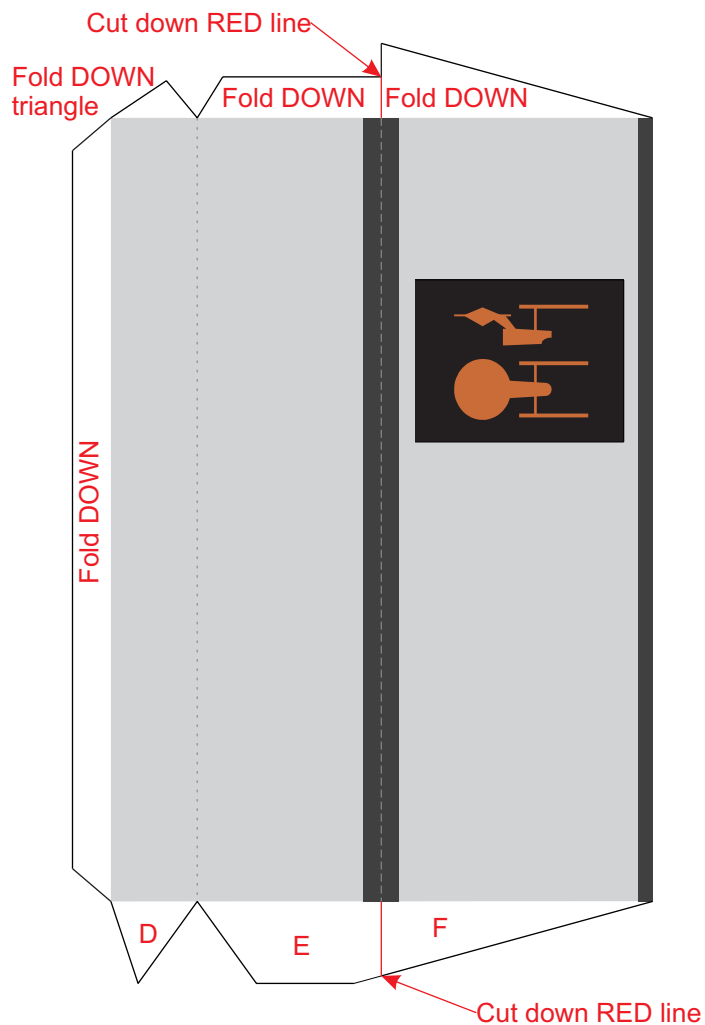
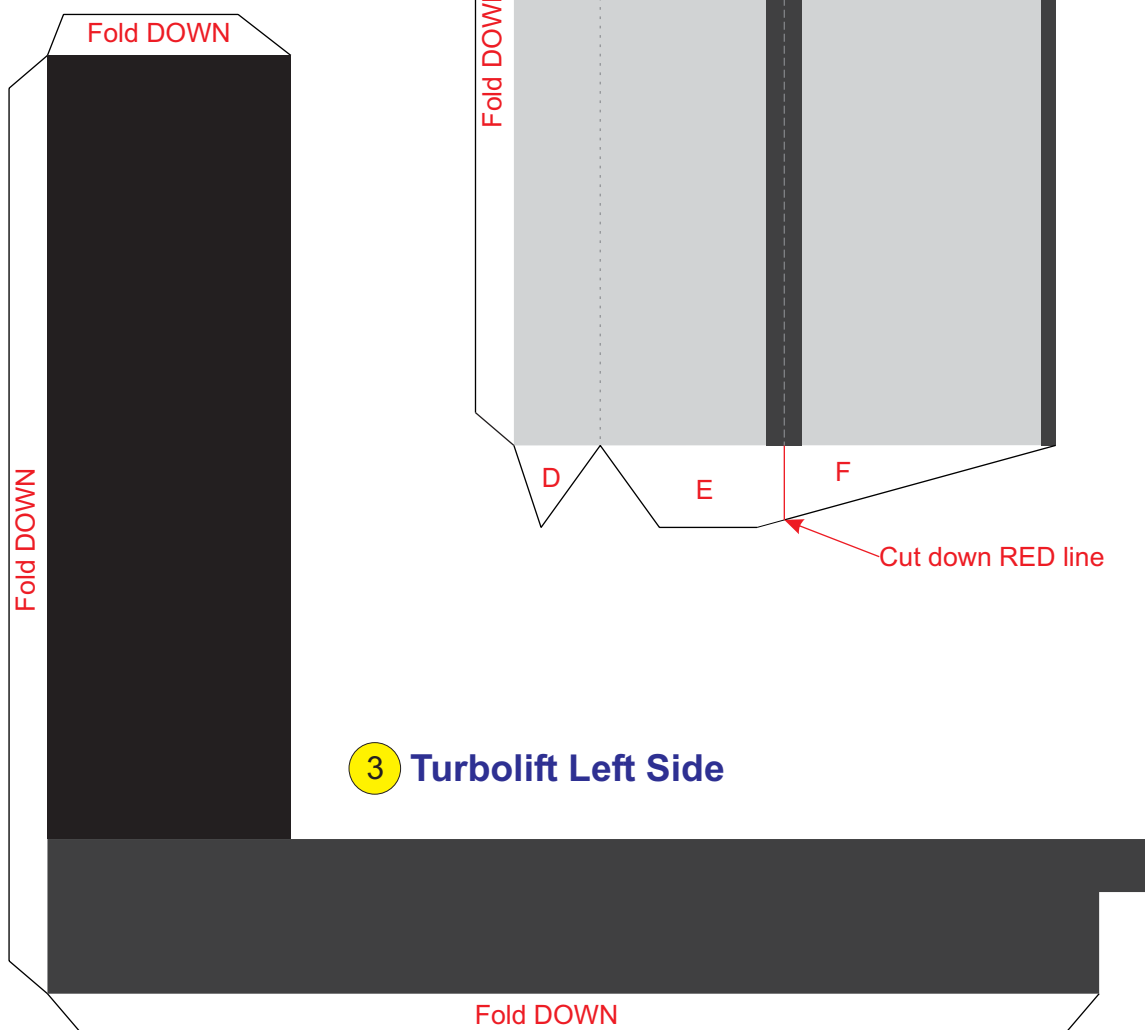
USS ENTERPRISE BRIDGE (NCC-1701)Print this page on 110 pound (199 g/m²) cardstock**Hako-sized Model design by Ron Caudillo (ronaldcaudillo@yahoo.com)**

Valley Fold (fold up) -----

Mountain Fold (fold down) -----

Sized for Hako figures designed by: Masume Washington, Steve Marshall, and The Professor

centimeters

5 Left Side Wall**3 Turbolift Left Side**

inches

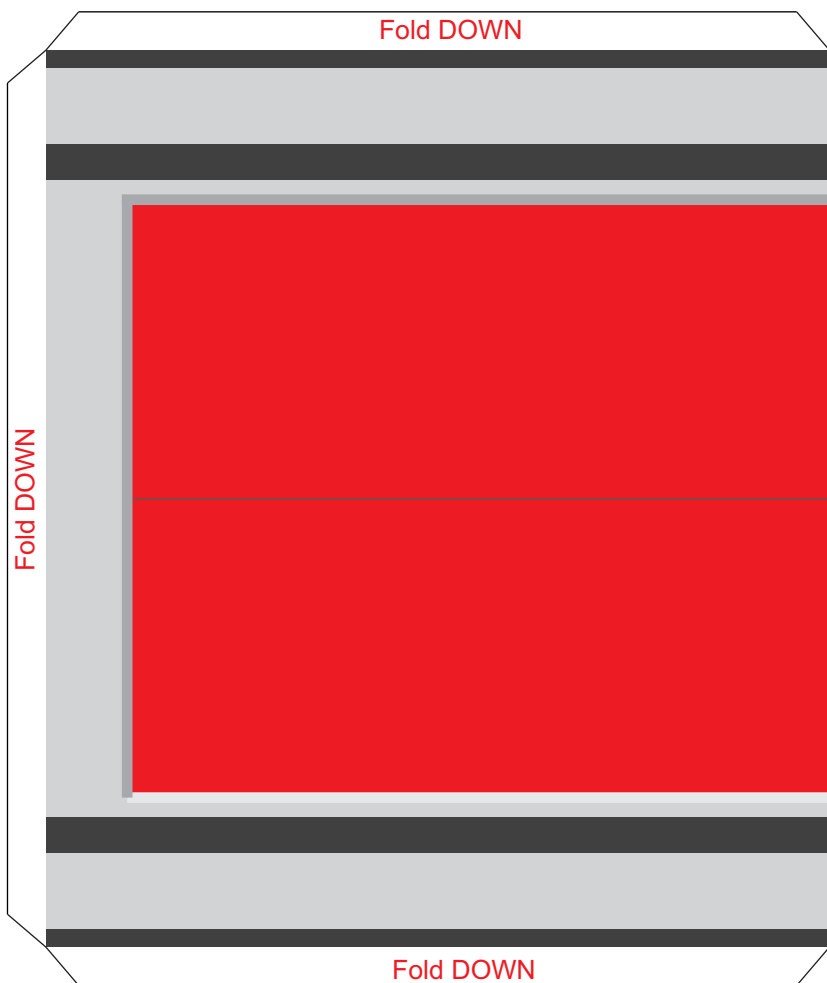
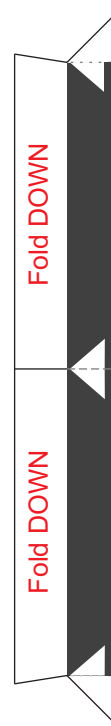
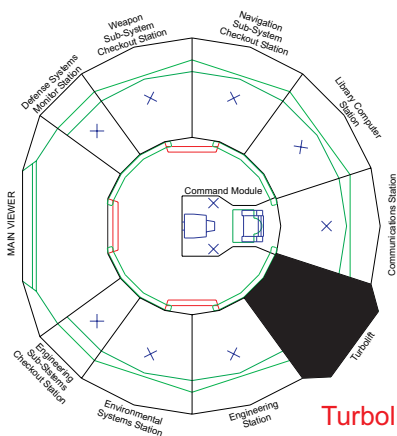
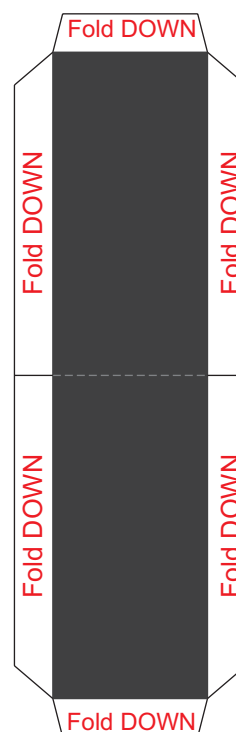
USS ENTERPRISE BRIDGE (NCC-1701)**Hako-sized Model design by Ron Caudillo (ronaldcaudillo@yahoo.com)**Print this page on 110 pound (199 g/m²) cardstock

Valley Fold (fold up) -----

Mountain Fold (fold down) -----

Sized for Hako figures designed by: Masume Washington, Steve Marshall, and The Professor

centimeters

6 Turbolift Doors**7 Base Front****8 Base Front Undercut**

Turbolift location in bridge model

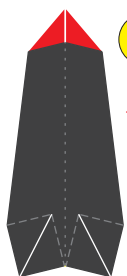
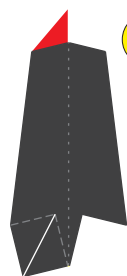
USS ENTERPRISE BRIDGE (NCC-1701)**Hako-sized Model design by Ron Caudillo (ronaldcaudillo@yahoo.com)**Print this page on 110 pound (199 g/m²) cardstock

Valley Fold (fold up) -----

Mountain Fold (fold down) -----

Sized for Hako figures designed by: Masume Washington, Steve Marshall, and The Professor

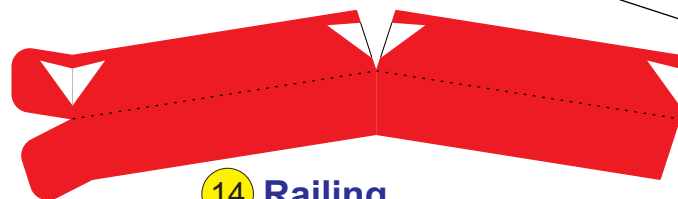
centimeters

**11**Fold RED
triangle DOWN**Left Side
Rail Support****12**Fold RED
triangles DOWN**Center
Rail Support****13**Fold RED
triangles DOWN**Right Side
Rail Support****9 Station Base**

Designed by:

**CUSTOM MODELS**
Ron CaudilloSaddle Brook, New Jersey
ronaldcaudillo@yahoo.com

For Kirok of L'Stok's:

<http://12daysxmas.thunderdownunder.org/>**December, 2007****14****Railing**

Fold Up

Fold Up

inches

USS ENTERPRISE BRIDGE (NCC-1701)**Hako-sized Model design by Ron Caudillo (ronaldcaudillo@yahoo.com)**Print this page on 110 pound (199 g/m²) cardstock

Valley Fold (fold up) -----

Mountain Fold (fold down) -----

Sized for Hako figures designed by: Masume Washington, Steve Marshall, and The Professor

10 Turbolift Back

No copyright infringement intended. This is a fan produced design for the free enjoyment of all Star Trek fans everywhere. Star Trek in all forms is copyright and trademark of CBS Paramount Studios.

**TURBOLIFT**