

# USS ENTERPRISE BRIDGE (NCC-1701)

Hako-sized Model design by Ron Caudillo (ronalcaudillo@yahoo.com)

Print this page on 110 pound (297 g/m<sup>2</sup>) cardstock

Valley Fold (fold up) -----

Mountain Fold (fold down) -----

Sized for Hako figures designed by:

Masume Washington (<http://masamune.freespaces.com/>),

Steve Marshall (<http://www.homespunmagixx.com/>),

and The Professor ([http://www.professorplastik.com/monster\\_site/proscenium/kits/xtrakits/paperkits/page\\_gohako.htm#](http://www.professorplastik.com/monster_site/proscenium/kits/xtrakits/paperkits/page_gohako.htm#))

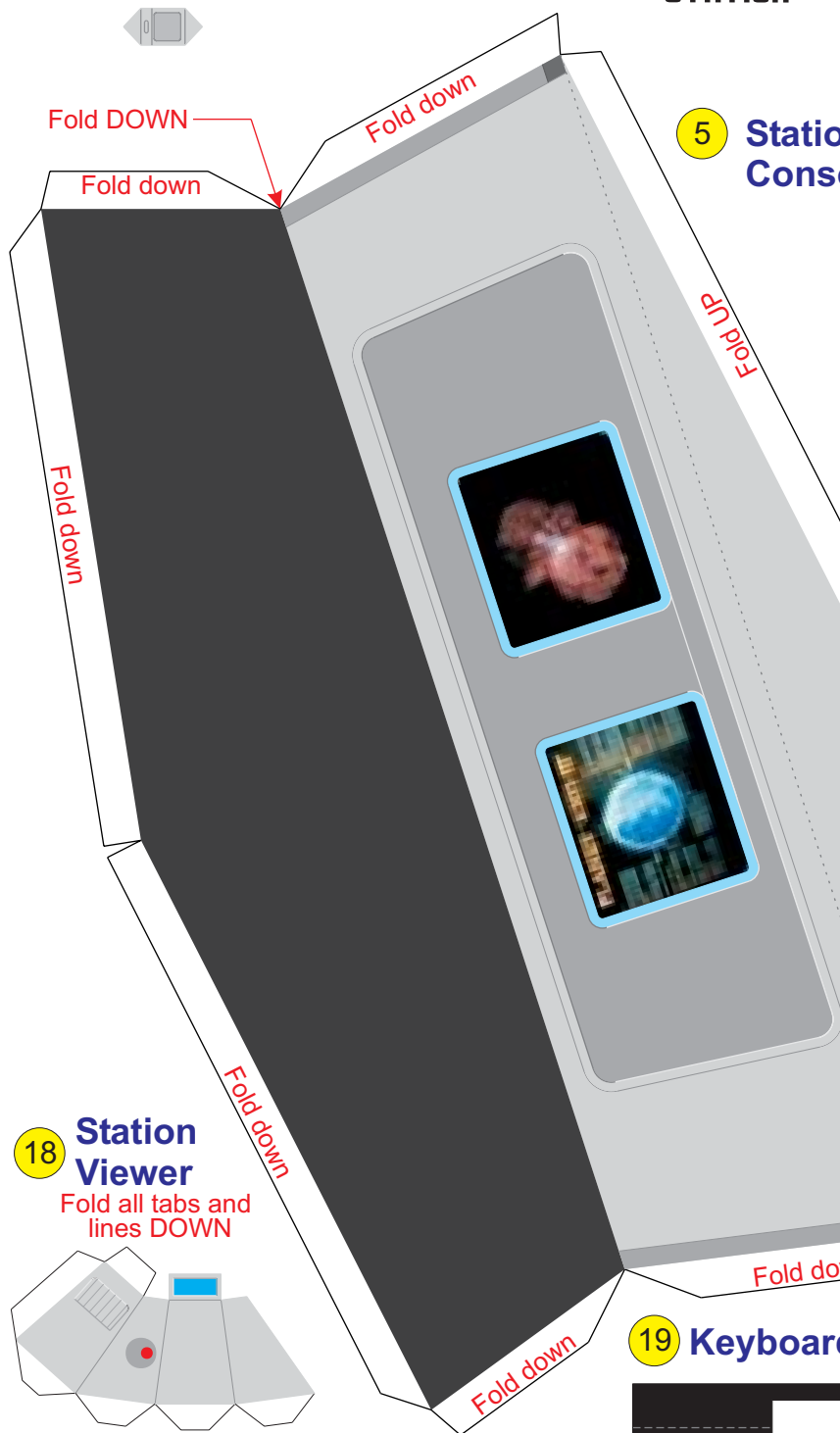
## 17 Station Intercomm

Fold end triangles DOWN



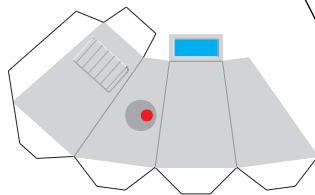
## LIBRARY COMPUTER STATION

## 5 Station Console



## 18 Station Viewer

Fold all tabs and lines DOWN

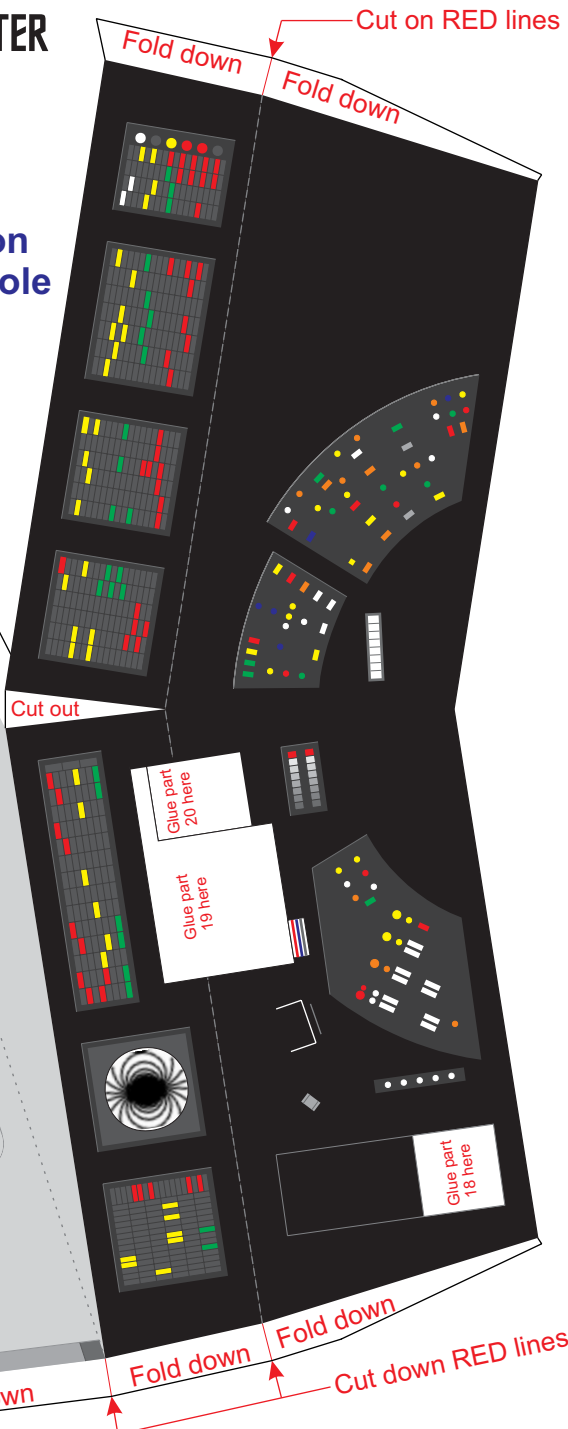
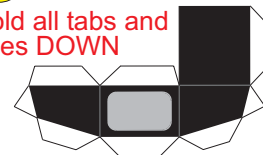


## 19 Keyboard



## 20 Display

Fold all tabs and lines DOWN



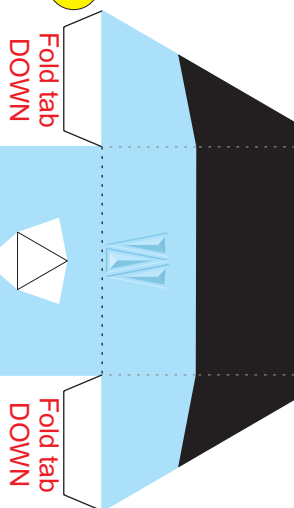
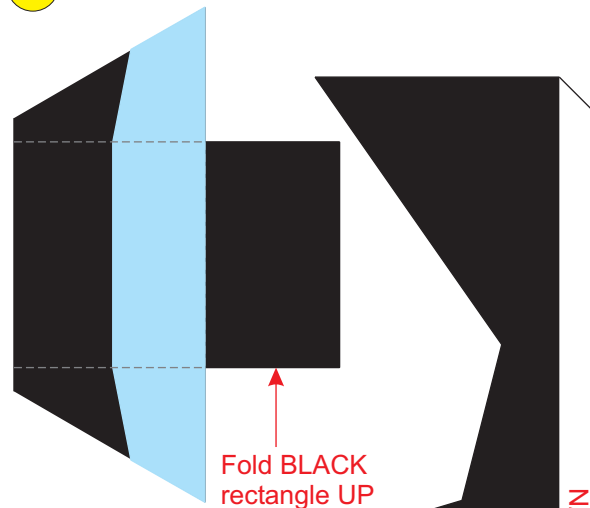
**USS ENTERPRISE BRIDGE (NCC-1701)****Hako-sized Model design by Ron Caudillo (ronaldcaudillo@yahoo.com)**Print this page on 110 pound (297 g/m<sup>2</sup>) cardstock

Valley Fold (fold up) -----

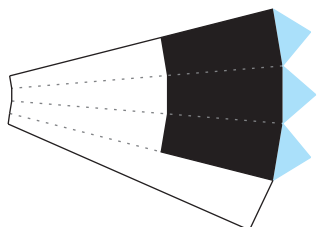
Mountain Fold (fold down) -----

Sized for Hako figures designed by: Masume Washington, Steve Marshall, and The Professor

centimeters

**10 Chair****11 Chair Cushion****12 Chair Post**

Fold CYAN triangles UP



Fold DOWN

Fold DOWN

Fold DOWN

**2 Console Right Side**

Fold DOWN

Fold DOWN

Fold DOWN

**3 Console Left Side**

Fold DOWN

Fold DOWN

inches

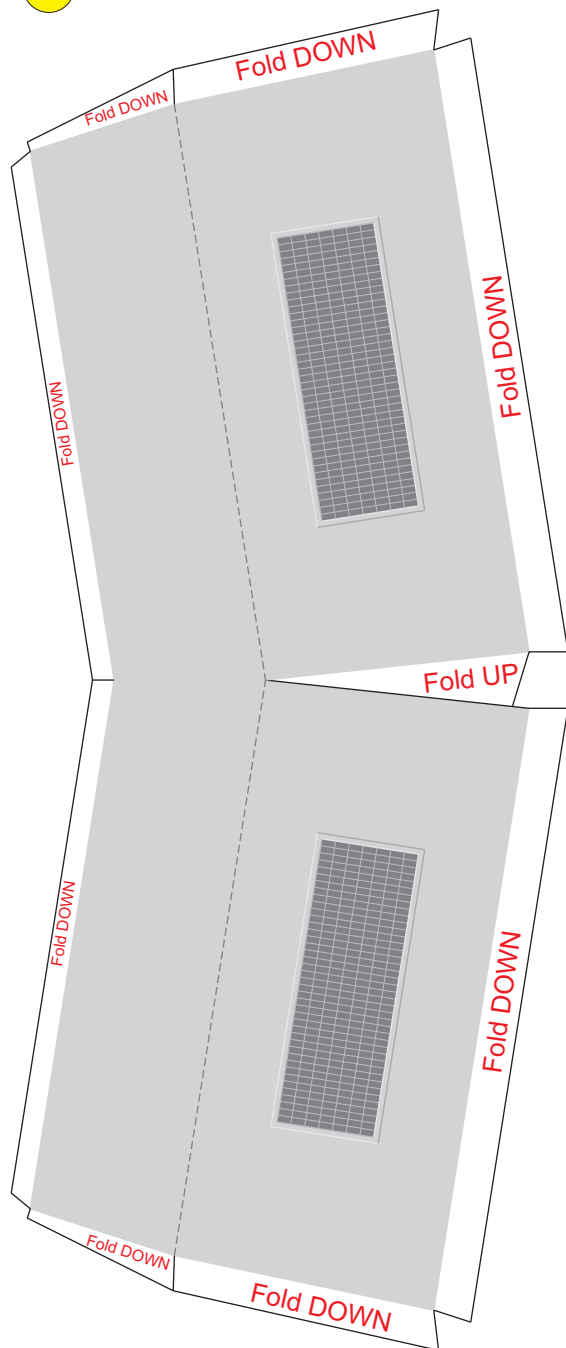
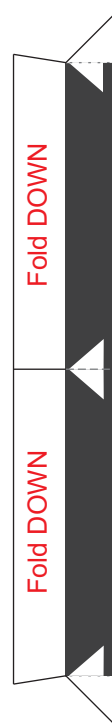
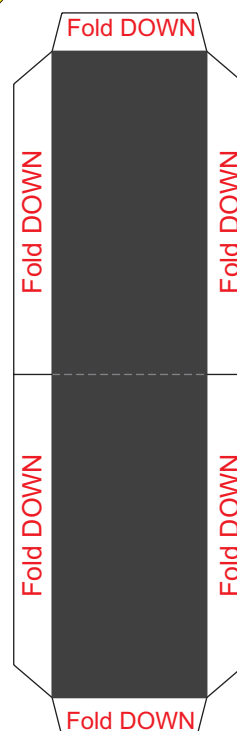
**USS ENTERPRISE BRIDGE (NCC-1701)****Hako-sized Model design by Ron Caudillo (ronaldcaudillo@yahoo.com)**Print this page on 110 pound (297 g/m<sup>2</sup>) cardstock

Valley Fold (fold up) -----

Mountain Fold (fold down) -----

Sized for Hako figures designed by: Masume Washington, Steve Marshall, and The Professor

centimeters

**4 Station Base****6 Base Front****7 Base Front Undercut**

inches

# USS ENTERPRISE BRIDGE (NCC-1701)

Hako-sized Model design by Ron Caudillo (ronaldcaudillo@yahoo.com)

Print this page on 110 pound (297 g/m<sup>2</sup>) cardstock

Valley Fold (fold up) -----

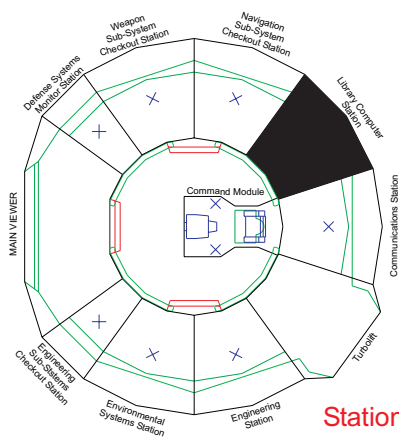
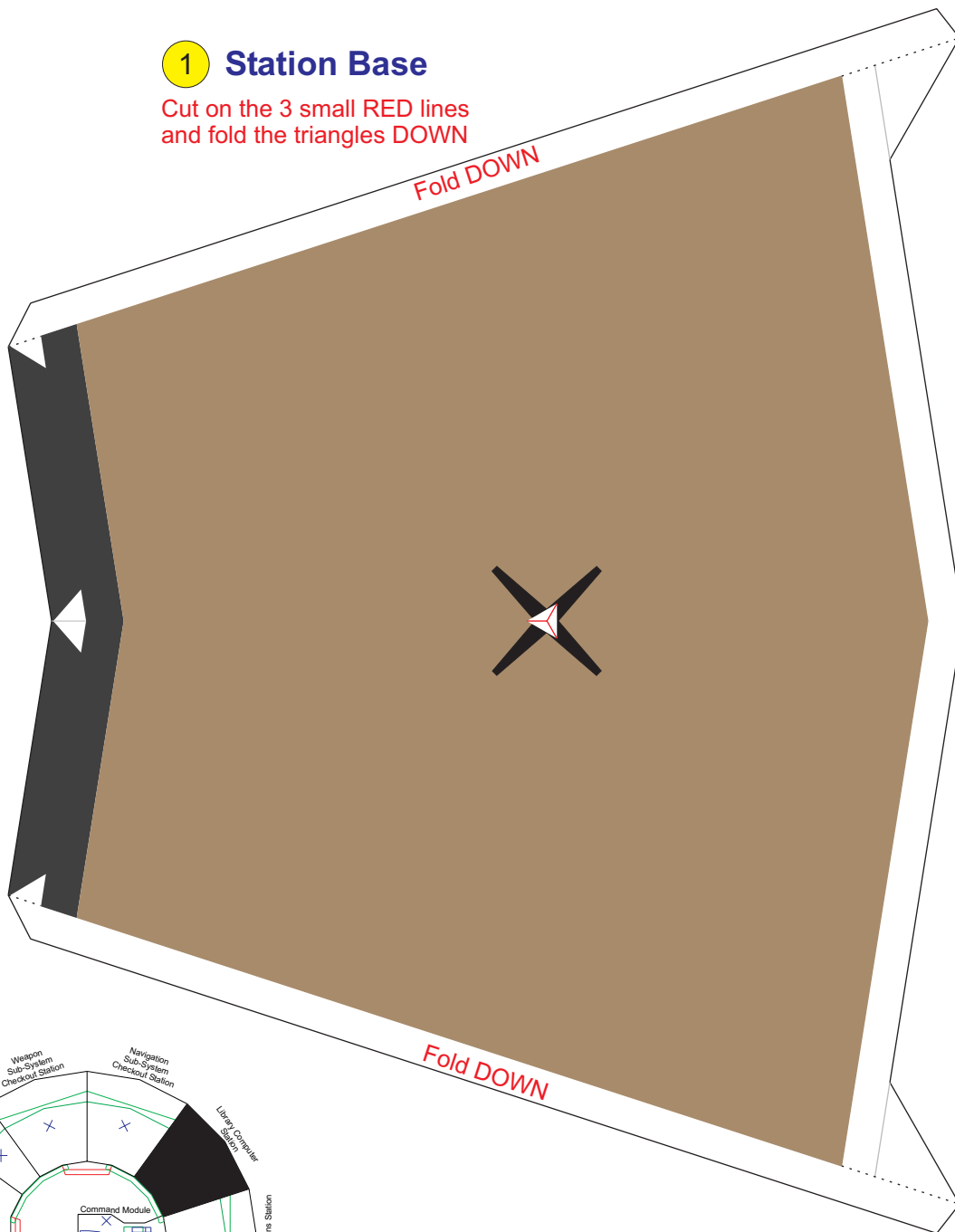
Mountain Fold (fold down) -----

Sized for Hako figures designed by: Masume Washington, Steve Marshall, and The Professor

centimeters

## 1 Station Base

Cut on the 3 small RED lines  
and fold the triangles DOWN



Station location in bridge model

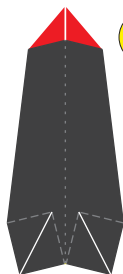
**USS ENTERPRISE BRIDGE (NCC-1701)****Hako-sized Model design by Ron Caudillo (ronaldcaudillo@yahoo.com)**Print this page on 110 pound (297 g/m<sup>2</sup>) cardstock

Valley Fold (fold up) -----

Mountain Fold (fold down) -----

Sized for Hako figures designed by: Masume Washington, Steve Marshall, and The Professor

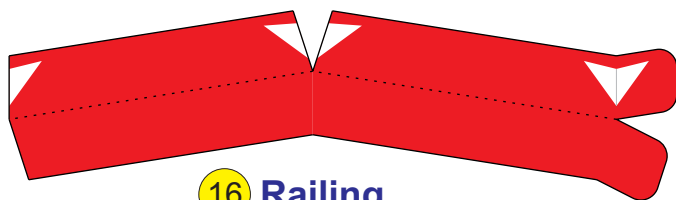
centimeters

**13**Fold RED  
triangle DOWN**Left Side  
Rail Support****14**Fold RED  
triangles DOWN**Center  
Rail Support****15**Fold RED  
triangles DOWN**Right Side  
Rail Support****8 Station Bottom**

Designed by:

**CUSTOM MODELS**  
**Ron Caudillo**Saddle Brook, New Jersey  
ronaldcaudillo@yahoo.com

For Kirok of L'Stok's:

<http://12daysxmas.thunderdownunder.org/>**December, 2007****16 Railing**

inches



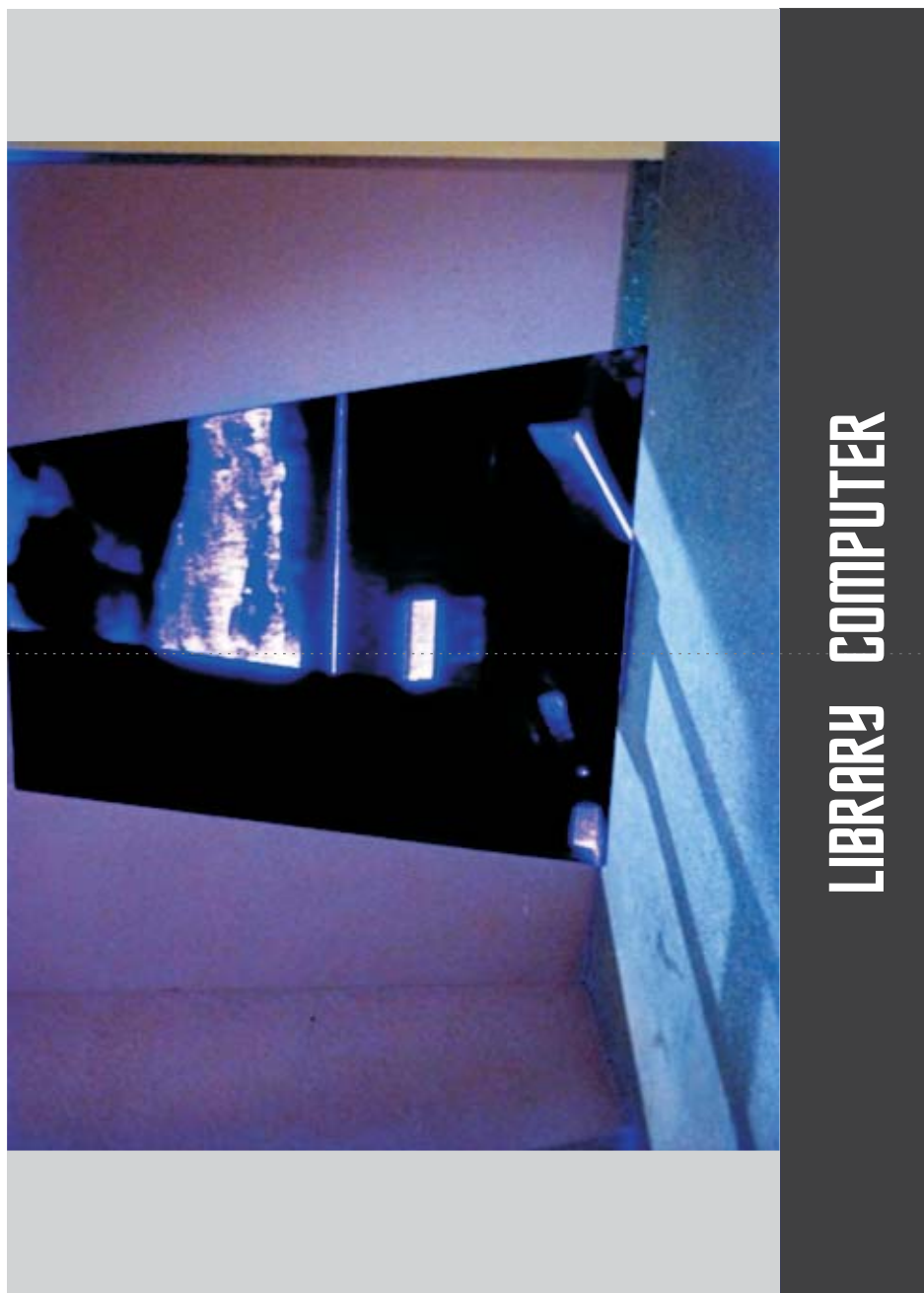
**USS ENTERPRISE BRIDGE (NCC-1701)****Hako-sized Model design by Ron Caudillo (ronaldcaudillo@yahoo.com)**Print this page on 110 pound (297 g/m<sup>2</sup>) cardstock

Valley Fold (fold up) -----

Mountain Fold (fold down) .....

Sized for Hako figures designed by: Masume Washington, Steve Marshall, and The Professor

centimeters

**9 Station Back**

No copyright infringement intended. This is a fan produced design for the free enjoyment of all Star Trek fans everywhere. Star Trek in all forms is copyright and trademark of CBS Paramount Studios.